

# JC SECURITY

## Catalouge

### Professional Security Products



2023



RS-CH358M3KGB-TF-L36PW-M  
5MP Network Fixed IR-Turret Camera



- 1/2.7" 5MP Progressive CMOS
- Color 0.002Lux @(F1.2,AGC ON) ; B/W 0lux @ IR ON
- 3.6mm Focal Length,IR upto 30Mtrs
- Micro SD slot, up to 256GB, Built-in microphone,IP66

RS-CH356M4KGB-TF-L28PW-M  
5MP Network Fixed IR-Turret AI Lite Camera



- 1/2.7" 5MP Progressive CMOS
- Color 0.002Lux @(F1.2,AGC ON) ; B/W 0lux @ IR ON
- 2.8mm Focal Length,IR upto 30Mtrs
- Micro SD slot, up to 256GB, Built-in microphone,IP66
- Supports License Plate Recognition and Facial Recognition
- Smart Feature : PID,LCD,PD/VD,SOD,CC,CD,QD,HM,RSD,LP-D,FD

RS-CH356M4MCA-DF-W2812PW-A  
5MP Network Motorised IR-Turret Camera



- 1/2.7" 5MP Progressive CMOS
- Color 0.002Lux @(F1.2,AGC ON) ; B/W 0lux @ IR ON
- 2.8mm - 12mm Focal Length,IR upto 45Mtrs
- Micro SD slot, up to 256GB, IP66
- Supports License Plate Recognition and Facial Recognition
- Smart Feature :PID,LCD,PD/VD,SOD,CC,CD,QD,HM

RS-CH252M6ND-DF-WA2812PW  
5MP Network Motorised IR-Bullet Camera



- 1/2.7" 5MP Progressive CMOS
- Color 0.002Lux @(F1.2,AGC ON) ; B/W 0lux @ IR ON
- 2.7mm - 13.5mm Focal Length,IR upto 45Mtrs
- Micro SD slot, up to 256GB, IP66
- Supports License Plate Recognition and Facial Recognition
- Smart Feature : PID,LCD,SOD,PD/VD,FD,CC,CD,QD,HM

RS-CH356M4KEB-HALTF-LFW28PW  
5MP Active Deterrence Network Fixed-Turret Camera- AIOC



- 1/2.7" 5MP Progressive CMOS
- Color 0.002Lux @(F1.2,AGC ON) ; B/W 0lux @ IR ON
- 2.8mm Focal Length,IR upto 25Mtrs
- WarmLight Viewable Length upto 25m, IP66
- Micro SD slot, up to 256GB, Built-in microphone & Speaker
- Supports License Plate Recognition and Facial Recognition
- Smart Feature : PID,LCD,PD/VD,SOD,CC,CD,QD,HM,RSD,LPD,FD

RS-CH356M4MDA-LDF-LFW2812PW-A  
5MP Network Motorised Warm Light-Turret Camera



- 1/2.7" 5MP Progressive CMOS
- Color 0.002Lux @(F1.2,AGC ON) ; B/W 0lux @ IR ON
- 2.8mm - 12mm Focal Length,IR upto 30Mtrs
- WarmLight Viewable Length upto 25m
- Micro SD slot, up to 256GB, IP66
- Supports License Plate Recognition and Facial Recognition
- Smart Feature : PID,LCD,SOD,PD/VD,CC,CD,QD,HM

RS-CH252M6VA-DF-WA0550PW  
5MP Network Motorised Long-Range IR - Bullet Camera



- 1/2.7" 5MP Progressive CMOS
- Color 0.002Lux @(F1.2,AGC ON) ; B/W 0lux @ IR ON
- 5mm - 50mm Focal Length,IR upto 80Mtrs
- Micro SD slot, up to 256GB, IP66
- Supports License Plate Recognition and Facial Recognition
- Smart Feature : ID,LCD,SOD,PD/VD,FD,CC,CD,QD,HM

RS-CH356M4KRB-LTF-LFW28PW-M  
5MP Network Fixed Warm Light-Turret Camera



- 1/2.7" 5MP Progressive CMOS
- Color 0.002Lux @(F1.0,AGC ON) ; B/W 0lux @ IR ON
- 2.8mm Focal Length,IR upto 30Mtrs
- Supports License Plate Recognition and Facial Recognition
- WarmLight Viewable Length upto 25m
- Micro SD slot, up to 256GB, Built-in microphone,IP67
- Smart Feature : PID,LCD,PD/VD,SOD,CC,CD,QD,HM



**Item Code : RS-N7604HR-PR**  
**4CH AI Network Video Recorder**



- Supports upto 8MP, 120Mbps
- 1 Bay HDD upto 10TB
- Video Compression : H.264/H.265
- Supports Artificial Intelligence

**Item Code : RS-N7708HR-P**  
**8CH AI Network Video Recorder**



- Supports upto 8MP, 256Mbps
- 1 Bay HDD upto 10TB
- Video Compression : H.264/H.265
- Supports Artificial Intelligence

**Item Code : RS-N7708HJ-PR**  
**8CH AI Network Video Recorder**



- Supports upto 8MP, 256Mbps
- 2 Bay HDD upto 10TB each bay
- Video Compression : H.264/H.265
- Supports Artificial Intelligence

**Item Code : RS-N7316GR-P-EP**  
**16CH AI Network Video Recorder**



- Supports upto 8MP, 380Mbps
- 2 Bay HDD upto 10TB each bay
- Video Compression : H.264/H.265
- Supports Artificial Intelligence

**Item Code : RS-N7332QR-P-E**  
**32CH AI Network Video Recorder**



- Supports upto 8MP, 380Mbps, 16 Port PoE
- 4 Bay HDD upto 10TB each bay
- Video Compression : H.264/H.265
- Supports Artificial Intelligence

**Item Code : RS-N7332PC-P-E**  
**32CH AI Network Video Recorder**



- Supports upto 8MP, 380Mbps, 16 Port PoE
- 8 Bay HDD upto 10TB each bay
- Video Compression : H.264/H.265
- Supports Artificial Intelligence

**Item Code : RS-N10256OD-E4HL**  
**256 CH AI Network Video Recorder**



- Supports upto 8MP
- 16 SATA HDD upto 18TB each bay
- Video Compression : H.264/H.265
- Supports Artificial Intelligence

**Item Code : RS-BZJ-B-2**  
**Wall Mount Bracket**



- Material: Aluminum
- Junction Box
- Water-proof
- Vandal-proof
- For large Eyeball Cameras

**Item Code : RS-BZJ-C-2**  
**Wall Mount Bracket**



- Material: Aluminum
- Junction Box
- Water-proof
- Vandal-proof
- For standard Eyeball Cameras

**Item Code : RS-CXH-I**  
**Water-proof Junction Box**



- Material: Aluminum
- Vandal-proof
- For large & standard Bullet Cameras

**LA-AI106**  
4-Port PoE Switch + 2 Uplink

- 2 \* 10/100/1000Mbps Uplink Ports
- 4 \* 10/100 Base-T (PoE power supply)
- Supports VLAN
- All Ports Supports 250Mtrs long distance



**LA-NS6080L**  
8-Port Network Switch

- 8 10/100/1000Mbps RJ45 port
- 10 or 100Mbps half duplex
- 100/1000Mbps full duplex



**LA-AI2082G**  
8-Port Gigabit PoE Switch + 2 Uplink

- 2 \* 10/100 Mbps Uplink Ports
- 8 \* 10/100 Base-T (PoE power supply)
- Supports VLAN
- All Ports Supports 250Mtrs long distance



**LA-AI2010GX**  
8-Port Managed Network POE Switch

- 1-8 ports support 250 meters long distance



**LA-AI6016**  
16-Port Unmanaged PoE Switch + 2 Uplink

- 2 \* 10/100/1000 Mbps Uplink Ports
- 16 \* 10/100 Base-T (PoE power supply)
- Supports VLAN
- 1-8 Ports Supports 250Mtrs long distance



**LA-NS6024G**  
24-Port Network Switch

- 24 port 100/1000Mbps RJ45 port
- 10 or 100Mbps half duplex
- 100/1000Mbps full duplex



**LA-AI6024**  
24-Port Network POE Switch

- 1-8 ports support 250 meters long distance
- 24-Port 10/100Mbps PoE port
- 1 Gigabit Combo uplink Port
- 1 Gigabit ethernet RJ45 port
- unmanaged PoE Switch



**LA-PS2024G**  
24-Port Gigabit Layer 3 Managed PoE Switch

- Layer 3 Managed Switch
- 4 \* Gigabit SFP Uplink Ports
- 1 Management console Port
- 24 \* 10/100/1000 Base-T (PoE power supply)
- Supports VLAN, PoE Power :300W
- 1-8 Ports Supports 250Mtrs long distance





**LA-JT-10GDT (4G)  
GSM+WIFI ALARM SYSTEM**



- 1 \* Alarm Panel
- 4 \* Wireless PIR Detector
- 2 \* Door Magnetic
- 2 \* Remote Control
- 1 \* Power Adapter
- 1 \* User Manual

**LA-106AW  
Wireless outdoor sound and light siren**



- 1 \* Wireless Siren
- 1 \* Power Adapter
- 1 \* user manual

**LA-AU -Socket**



- AU Wifi Socket
- 1 \* user manual

**LA-10F5  
Cloud Storage Intelligent**



- 1 \* Cloud storage camera
- Smart H.264+, Two way audio
- Rotation Angle - Horizontal:355° ; vertical: 90°
- Auto Tracking , DC 5V 1.5Amp Power Adapter
- Low Illumination 0.1LUX/F1.2

**LA-228W  
Wireless Smoke Detector**



- 20m<sup>2</sup> Detection Area
- 433MHz Transmitting Frequency
- Transmitting Distance : upto 150m(Open Area)
- Installation height 1.7 to 2.5m(2.2m is proposed)

**LA-801W  
Wireless Ceiling PIR Detector**



- Detection Distance : 10m
- Detection Angle : 360°
- Transmitting Distance : upto 150m(Open Area)
- Installation height :1.7 to 2.5m(2.2m is proposed)

**LA-856W  
Glass Break Detector**



- Wireless Audio type glass breaker detector
- Transmitting frequency 315-433MHz
- Detection indicator 60 degrees
- Detection range sound 16dB
- Highest sensitivity is 9m

LP-S01  
Fig 8 Red Black



- Figure 8 14/0.20mm
- 250 meters

LP-R01  
RG59 Composite



- RG59 Composite Cable
- 200Mtrs

4 Core 7\*0.2 305Mtrs



- 4 Core 7/0.2mm Alarm Cable, 305Mtrs

4 Core 14\*0.2 305Mtrs



- 4 Core 14/0.2mm Alarm Cable, 305Mtrs

LP-A01  
4 Core Alarm Cable-Brown



- 4 Core 14/0.20mm Alarm Cable, 100Mtrs

UPS-LA650VA  
650VA/390W



- A wide range of applicable voltage
- Power intelligent management
- Excellent microprocessor control guarantees high reliability
- Boost and buck AVR for voltage stabilization
- Auto charging
- Simulated sine wave
- Off-mode charging

UPS-LA1200  
1200VA/720W



- A wide range of applicable voltage
- Power intelligent management
- Excellent microprocessor control guarantees high reliability
- Boost and buck AVR for voltage stabilization
- Auto charging
- Simulated sine wave
- Off-mode charging

UPS-LA2000  
2000VA/1200W



- A wide range of applicable voltage
- Power intelligent management
- Excellent microprocessor control guarantees high reliability
- Boost and buck AVR for voltage stabilization
- Auto charging
- Simulated sine wave
- Off-mode charging

### EZ-IP 4MP 4 Channel Kit

1X 4 Channel NVR  
+  
4X 4MP Camera  
+  
1X 2 TB Hard Drive



### EZ-IP 4MP 8 Channel Kit

1X 8 Channel NVR  
+  
6X 4MP Camera  
+  
1X 2 TB Hard Drive



### EZ-IP 6MP 4 Channel Kit

1X 4 Channel NVR  
+  
4X 6MP Camera  
+  
1X 2 TB Hard Drive



### EZ-IP 6MP 8 Channel Kit

1X 8 Channel NVR  
+  
6X 6MP Camera  
+  
1X 2 TB Hard Drive



### EZ-IP 8MP 4 Channel Kit

1X 4 Channel NVR  
+  
4X 8MP Camera  
+  
1X 2 TB Hard Drive



### EZ-IP 8MP 8 Channel Kit

1X 8 Channel NVR  
+  
6X 8MP Camera  
+  
1X 2 TB Hard Drive





## EZ-IPC-D2B42-AS-S2-AUS

### 4MP IR Fixed-focal Dome Network Camera



- 4 MP, 1/3" CMOS image sensor
- 2.8mm;3.6mm Fixed-focal lens
- Built-in IR LED, max IR distance: 30 m
- 256 GB Micro SD card
- Metal casing
- IP67, IK10, 12VDC

## EZ-IPC-D2B62-AS-S2-AUS

### 6MP IR Fixed-focal Dome Network Camera



- 6 MP, 1/2.7" CMOS image sensor
- 2.8mm;3.6mm Fixed-focal lens
- Built-in IR LED, max IR distance: 30 m
- 256 GB Micro SD card
- Metal casing
- IP67, IK10, 12VDC

## EZ-IPC-D2B82-AS-S2-AUS

### 8MP IR Fixed-focal Dome Network Camera



- 8 MP, 1/2.7" CMOS image sensor
- 2.8mm;3.6mm Fixed-focal lens
- Built-in IR LED, max IR distance: 30 m
- 256 GB Micro SD card
- Metal casing
- IP67, IK10, 12VDC

## EZ-IPC-T1B42-AS-S2-AUS

### 4MP IR Fixed-focal Eyeball Network Camera



- 4 MP, 1/3" CMOS image sensor
- 2.8mm;3.6mm Fixed-focal lens
- Built-in IR LED, max IR distance: 30 m
- 256 GB Micro SD card
- Metal casing; 0.008 Lux @ F1.6
- IP67, 12VDC

## EZ-IPC-T1B62-AS-S2-AUS

### 6MP IR Fixed-focal Eyeball Network Camera



- 6 MP, 1/2.7" CMOS image sensor
- 2.8mm;3.6mm Fixed-focal lens
- Built-in IR LED, max IR distance: 30 m
- 256 GB Micro SD card
- Metal casing; 0.008 Lux @ F1.6
- IP67, 12VDC

## EZ-IPC-T1B82-AS-S2-AUS

### 8MP IR Fixed-focal Eyeball Network Camera



- 8 MP, 1/2.7" CMOS image sensor
- 2.8mm;3.6mm Fixed-focal lens
- Built-in IR LED, max IR distance: 30 m
- 256 GB Micro SD card
- Metal casing; 0.009 Lux @ F2.0
- IP67, 12VDC

## EZ-IPC-B3B42-AS-S2-AUS

### 4MP IR Fixed-focal Bullet Network Camera



- 4 MP, 1/3" CMOS image sensor
- 2.8mm;3.6mm Fixed-focal lens
- Built-in IR LED, max IR distance: 30 m
- 256 GB Micro SD card
- Metal casing; 0.008 Lux@F1.6
- IP67, 12VDC

## EZ-IPC-B3B62-AS-S2-AUS

### 6MP IR Fixed-focal Bullet Network Camera



- 6 MP, 1/2.7" CMOS image sensor
- 2.8mm;3.6mm Fixed-focal lens
- Built-in IR LED, max IR distance: 30 m
- 256 GB Micro SD card
- Metal casing; 0.008 Lux @ F1.6
- IP67, 12VDC

## EZ-IPC-B3B82-AS-S2-AUS

### 8MP IR Fixed-focal Bullet Network Camera



- 8 MP, 1/2.7" CMOS image sensor
- 2.8mm;3.6mm Fixed-focal lens
- Built-in IR LED, max IR distance: 30 m
- 256 GB Micro SD card
- Metal casing; 0.009 Lux @ F2.0
- IP67, 12VDC

## NVR1B04HS-4P/L

4 Channel 1U H.265 4PoE NVR



- H.265/H.264 codec decoding
- Max 48Mbps Incoming Bandwidth
- Up to 3MP Resolution for Preview and Playback
- Up to 2ch@1080P decoding
- HDMI/VGA simultaneous video output
- Support IPC UPnP, 4PoE ports

## NVR1B08HS-4P/L

8 Channel 1U H.265 4PoE NVR



- H.265/H.264 codec decoding
- Max 48Mbps Incoming Bandwidth
- Up to 3MP Resolution for Preview and Playback
- Up to 2ch@1080P decoding
- HDMI/VGA simultaneous video output
- Support IPC UPnP, 8PoE ports

## NVR1B16HS-4P/L

16 Channel 1U H.265 4PoE NVR



- H.265/H.264 codec decoding
- Max 48Mbps Incoming Bandwidth
- Up to 3MP Resolution for Preview and Playback
- Up to 2ch@1080P decoding
- HDMI/VGA simultaneous video output
- Support IPC UPnP, 16PoE ports

**CVI-HFW1200B**  
2MP HDCVI IR-Bullet Camera



- 3.6mm Fixed Lens
- Max. IR length 50m, Smart IR
- Metal Casing
- IP67, DC12V

**CVI-HDBW2221R-Z**  
2MP WDR HDCVI IR Motorized Dome



- 2.7-12mm motorized lens
- Max. IR length 30m, Smart IR
- 0.03Lux/F1.4, 0Lux IR on
- IP67, IK10, DC12V.

Trade Price

**CVI-HUM1220A-PIR**  
2MP HDCVI MotionEye



- Max 30fps@1080P
- 2.8mm Fixed lens
- Two level detection sensitivity adjustable
- 12m/100°detecting range/angle
- DC12V

**CVI-HDBW1200E**  
2MP HDCVI IR Dome Camera



- Max 30fps@1080P
- HD and SD output switchable
- 0.02Lux/F1.9, 30IRE, 0Lux IR on
- IP67, IK10, DC12V.

Trade Price

**CVI-HDBW2221R-Z-DP**  
2MP WDR HDCVI IR Dome Motorized



- 2.7-12mm motorized lens
- Max. IR length 30m, Smart IR
- 0.03Lux/F1.4, 0Lux IR on
- IP67, IK10, AC24V/DC12V

**CVI-HDW2231R-Z**  
2MP **Starlight** HDCVI IR Eyeball Motorized



- Starlight, 120dB true WDR, 3DNR
- 2.7-12mm motorized lens
- Max. IR length 60m, Smart IR
- IP67, DC12V
- DC12V, IP67.

**CVI-HFW2231R-Z-IRE6**  
2MP **Starlight** HDCVI IR Motorized



- Starlight, 120dB true WDR, 3DNR
- 2.7-13.5mm motorized lens (7-22mm)
- Max. IR length 60m, Smart IR
- Metal Casing
- DC12V, IP67

**CVI-HFW2249T-I8-A**  
2MP Full-color **Starlight** HDCVI Bullet



- FULL-COLOR STARLIGHT
- 3.6mm Fixed ,0.001Lux/F1.0, 30IRE
- Built-in mic,Metal Casing
- DC12V ±30%, IP67

**CVI-ME1400B-PIR**  
4MP MotionEye Camera



- 2.8mm fixed lens
- 10m/110°detecting range/angle
- Quaternionic digital sensor
- Max. IR length 20m, Smart IR
- IP67, DC12V

**CVI-HFW1400T**  
4MP IR Bullet Camera



- Max 30fps@4MP.
- 3.6MM Fixed lens
- Max. IR length 20m, Smart IR
- 0.03Lux/F2.0, 30IRE, 0Lux IR on
- DWDR,Metal Casing ,IP67, DC12V

## CVI-HFW2401R-Z-DP 4MP IR Bullet Motorized

**CLEARANCE SALE**

- 120dB True WDR, 3DNR, Max 4MP real-time
- 2.7-12mm motorized lens
- Max. IR length 60m, Smart IR
- 0.01Lux/F1.3, 0Lux IR on
- WDR: 120dB, Metal Casing, IP67, DC12V.



## CVI-HDBW2401R-Z 4MP IR Dome Motorized

**CLEARANCE SALE**

- 2.7-12mm motorized lens
- IR Distance up to 30m (98feet), smart IR
- 0.01Lux/F1.3, 0Lux IR on
- Max. IR length 30m, Smart IR
- Metal Casing, IP67, IK10, DC12V



## CVI-HDW1509T-A-LED 5MP Full Color Starlight Eyeball Camera



- Full-color starlight
- 40 m LED distance
- Built-in mic
- 3.6 mm fixed lens (2.8 mm optional)
- IP67, 12V±30% DC



**Trade Price**

## CVI-HDW1500TMQ-A 5MP Starlight IR Eyeball Camera



- Max 25 fps@5MP, 2.8mm fixed lens
- Max. IR length 60m, Smart IR
- 0.005Lux/F1.6, 30IRE, 0Lux IR on
- DWDR, Metal Casing, IP67, DC12V, Built in Mic



## CVI-HDW1800MP 8MP 4K IR Eyeball Camera

**CLEARANCE SALE**

- 1/2.7 inch CMOS
- 0.03Lux/F2.0, 30IRE, 0Lux IR on
- Fixed lens (2.8mm; 3.6mm; 6mm optional)
- Max. IR length 30m, Smart IR
- Metal Casing, IP67, DC12V±30%



## CVI-HDW2802T-A 8MP 4K Starlight IR Eyeball Camera



- Starlight, 120dB True WDR, 3DNR
- 3.6mm fixed lens (2.8mm, Optional)
- Max. IR length 50m, Smart IR
- Metal Casing, Built-in mic
- IP67, DC12V±30%



## CVI-HFW2802E-A 8MP 4K Starlight IR Bullet



- Starlight, 120dB True WDR, 3DNR
- Built-in mic
- 3.6mm fixed lens (2.8mm Optional)
- Max. IR length 40m, Smart IR
- Metal Casing, IP67, DC12V±30%



## CVI-ME1800TQ-PV2 4K Real-time HDCVI Active Deterrence Fixed IR Eyeball Camera

- Max. 4K resolution, real-time video transmission
- Active deterrence with red blue light, siren and alarm out interface.
- Quick-to-install eyeball save installation time.
- 2.8 mm fixed lens (3.6 mm Optional)
- Max. IR length 60 m, Smart IR
- P67, 12V±30% DC



## CVI-HFW2802T-Z-A 8MP 4K Starlight IR Bullet Camera



- Starlight, 120dB True WDR, 3DNR
- 3.7-11mm motorized lens
- Max. IR length 80m, Smart IR
- Metal Casing, Built-in mic, IP67, DC12V±30%



## CVI-HDW2802T-Z-A 8MP 4K Starlight IR Eyeball



- Starlight, 120dB True WDR, 3DNR
- 3.7-11mm motorized lens
- 0.005Lux/F1.5, 30IRE, 0Lux IR on
- Max. IR length 60m, Smart IR
- Metal Casing, built-in mic, IP67, DC12V±30%



## HCVR7104H-4M

4 Channel 4MP Mini 1U Digital Video Recorder

- Supports upto 4MP HDCVI Cameras
- Max 6 Channels IP Camera Inputs, up to 8MP
- Max 24Mbps Incoming Bandwidth
- HDMI output up to 4K, 1 Hard Disk Bay



## HCVR7208AN - 4M

8 Channel 4MP 1U Digital Video Recorder

- Supports upto 4MP HDCVI Cameras
- Support HDCVI/CVBS video inputs
- Max 12 channels IP camera inputs, up to 5MP
- Max 48Mbps Incoming Bandwidth
- 2 Hard Disk Bay



## XVR5116-HS

16 CH Pentabrid 1080P DVR

- Supports upto 2MP HDCVI Cameras
- 24 channels IP camera inputs, upto 5MP
- Max 96Mbps Incoming Bandwidth
- 2 Hard Disk Bay



Trade Price

## HCVR7216AN-S3

16CH Tribrid 1080P DVR

- Supports upto 2MP HDCVI Cameras
- Max 24 channels IP camera inputs, up to 5MP
- Max 96Mbps Incoming Bandwidth
- 2 Hard Disk Bay



## XVR5832S

32 Channel Penta-brid 1080P 2U Digital Video

- Supports upto 2MP HDCVI Cameras
- HDCVI/AHD/TVI/CVBS/IP video inputs
- 32CH IP camera inputs, each channel up to 8MP;
- Max 128Mbps incoming bandwidth
- HDMI2 for spot output, 8 Hard Disk Bay



## XVR5432L-I2

32CH Penta-brid 1080p Digital Video Recorder

- Supports upto 5MP HDCVI Cameras
- Max 32 channels IP camera input, up to 8MP
- Max 128Mbps Incoming Bandwidth
- Supports HDMI2 for spot output
- 4 Hard Disk Bay





## XVR5104HS-4KL-X 4CH Penta-brid 4K Compact WizSense DVR



- Supports upto 4 MP HDCVI Cameras
- 6 channels IP camera inputs
- Each CH up to 8MP; 24Mbps Incoming Bandwidth

## XVR5104HS-4KL-I2 4CH Penta-brid 4K Compact WizSense DVR



- Max 8 channels IP camera inputs, each channel up to 8MP
- Max 64 Mbps incoming bandwidth
- Up to 2 channels : Perimeter Protection
- Up to 4 channels : SMD Plus

## XVR5104HS-4KL-I3 4 Channels Penta-brid 4K Compact WizSense DVR



- Max 8 channels IP camera inputs, each channel up to 8MP
- Max 64 Mbps incoming bandwidth
- Up to 4 channels : Perimeter Protection
- Up to 4 channels : SMD Plus
- Up to 1 channel video stream: human face recognition

## XVR5108HS-4KL-I3 8 Channel Penta-brid 4K Compact WizSense DVR



- Max 16 channels IP camera inputs, each channel up to 8MP
- Max 128 Mbps incoming bandwidth
- Up to 8 channels : Perimeter Protection
- Up to 8 channels : SMD Plus

## XVR5216AN-4KL-I3 16Channel Penta-brid 4K WizSense DVR



- Supports upto 8 MP HDCVI Cameras
- Max 32 channels IP camera input, up to 8MP
- Max 128 Mbps Incoming Bandwidth
- Smart Search and Intelligent Video System
- Up to 8 channels : Perimeter Protection
- Up to 16 channels : SMD Plus

# DAHUA IP DOME CAMERAS [2-4 MP]



IPC-HDBW4231EP-ASE  
2MP IR Mini Dome Starlight



- 1/2.8" 2Megapixel progressive scan
- 2.8mm fixed lens (3.6mm Optional)
- Metal Casing, Max. IR LEDs Length 30m
- Micro SD memory, IP67, IK10, PoE
- 1/1 Alarm in/out, 1/1 audio in/out
- Micro SD memory, IP67, IK10, PoE

IPC-HDBW4239R-ASE  
2MP Dome Full Color Starlight



- 1/2.8" 2Megapixel progressive scan
- 1/1 Alarm in/out, 1/1 audio in/out
- 3.6mm fixed lens
- Micro SD memory, IP67, IK10, PoE

IPC-HDBW2431R-ZS  
4MP WDR IR Dome Network Motorised Camera



- 1/3" 4Megapixel progressive CMOS
- 2.7~13.5mm varifocal lens
- Max IR LEDs Length 50m
- 0.3Lux/F1.4( Color,1/30s,30IRE)
- IP67, IK10, PoE
- Micro SD card slot, up to 128GB

IPC-HDBW2431R-ZAS-S2  
4MP WDR IR Dome Network Motorised Camera



- 1/3" 4Megapixel progressive CMOS
- 2.7~13.5mm varifocal lens
- Max IR LEDs Length 50m
- 0.3Lux/F1.4( Color,1/30s,30IRE)
- IP67, IK10, PoE
- Micro SD card slot, up to 128GB

# DAHUA IP TURRET CAMERAS [4-5 MP]

IPC-HDW2531EM-AS-S2  
5MP Lite IR Eyeball Camera



- 1/2.7" 5Megapixel progressive scan CMOS
- Intelligent detection: Intrusion, tripwire
- 2.8mm/3.6mm fixed lens
- Built-in IR LED, max IR distance: 30 m
- Micro SD memory, Built in Mic, IP67, PoE

IPC-HDW2531T-ZS-S2  
5MP Lite IR Vari-Focal Eyeball Camera



- 1/2.7" 5Megapixel progressive scan CMOS
- Intelligent detection: Intrusion, tripwire
- 2.7mm~13.5mm varifocal lens
- Built-in IR LED, max IR distance: 40 m
- Micro SD memory, Built in Mic, IP67, PoE

IPC-HDW3541TM-AS  
5MP IR Fixed Eyeball Camera



- 5MP, 1/2.7" CMOS image sensor, low illuminance
- 2.8mm/3.6mm fixed lens
- Built-in IR LED, max. IR distance: 50 m
- Intrusion, tripwire, SMD Plus
- Supports max. 256 G Micro SD card, built-in Mic
- 0.005 Lux@F1.6, IP67, PoE



IPC-HDW3541TP-ZAS  
5MP IR Vari-Focal Eyeball Camera



- 5MP, 1/2.7" CMOS image sensor, low illuminance
- 2.7mm-13.5mm motorised lens
- Built-in IR LED, max. IR distance: 40 m
- Intrusion, tripwire, SMD Plus
- Supports max. 256 G Micro SD card, built-in Mic
- 0.005 Lux@F1.6, IP67, PoE



IPC-HDW3549TM-AS-LED  
5MP Full Color Fixed Warm LED Camera



- 5MP, 1/2.7" CMOS image sensor, low illuminance
- 2.8mm/3.6mm fixed lens
- Built-in Warm Light, max. distance: 30 m
- Intrusion, tripwire, SMD Plus
- Supports max. 256 G Micro SD card, built-in Mic
- 0.003 Lux@F1.0, IP67, PoE



IPC-HDW5541HP-AS-PV  
5MP IR Fixed Eyeball AI Camera



- 5MP, 1/2.7" CMOS image sensor, low illuminance
- 2.8mm/3.6mm Fixed lens
- Built-in IR LED, max. IR distance: 40 m
- Intrusion, tripwire, SMD Plus
- Micro SD card, Built-in Mic & Speaker
- 0.005 Lux@F1.6, IP67, PoE



IPC-HDW5442TM-AS  
4MP WDR IR Eyeball Face Detection AI Camera



- 1/1.8" 4Megapixel progressive scan CMOS
- 2.7~13.5mm varifocal lens
- 0.0023Lux/F1.6, Max IR Distance 50m
- IP67, PoE, Built in MIC
- Micro SD card slot, up to 128GB
- 5 - Years warranty



IPC-HDBW3541FP-AS-M  
5MP IR mini Wedge



- 1/2.7" 5 MP progressive scan CMOS
- 2.8mm or 3.6mm fixed lens
- 0.08Lux/F2.0 (Color), 0Lux/F2.0 (IR on)
- Max. IR Distance 30m
- Micro SD memory, IP67, IK10, SMD PLUS

\*Prices are exclusive of GST | All prices & Specifications are subject to change without notice.

IPC-HDW3666EMP-S-AUS  
6MP IR Eyeball Network Starlight Camera



- 1/2.7" 6Megapixel progressive scan
- 2.8mm
- Max. IR LEDs Length 30m
- 0.005Lux/F1.6( Color,1/30s,30IRE)
- IP67, PoE, Built-in Mic,SMD 4.0, AI SSA

**Wiz Sense**

IPC-HDW3666EMP-S-AUS-BLK  
6MP IR Eyeball Network Starlight Camera



- 1/2.7" 6Megapixel progressive scan
- 2.8mm
- Max. IR LEDs Length 30m
- 0.005Lux/F1.6( Color,1/30s,30IRE)
- IP67, PoE, Built-in Mic,SMD 4.0, AI SSA

**Wiz Sense**

IPC-HDW3666TP-ZS-AUS  
6MP IR Eyeball Network Motorised Starlight Camera



- 1/2.7" 6Megapixel progressive scan
- 2.7mm~13.5mm
- Max. IR LEDs Length 40m
- 0.005Lux/F1.6( Color,1/30s,30IRE)
- IP67, PoE, Built-in Mic,SMD 4.0, AI SSA

**Wiz Sense**

IPC-HDW3866EM-AS-AUS  
8MP IR Eyeball Network Starlight Camera



- 1/2.8" 8Megapixel CMOS image sensor
- 2.8mm fixed lens
- Max. IR LEDs Length 30m
- SMD Plus, Built in MIC
- Metal Casing, Micro SD memory, IP67, PoE

**Wiz Sense**

IPC-HDW3866EM-AS-AUS-BLK  
8MP IR Eyeball Network Starlight Camera



- 1/2.8" 8Megapixel CMOS image sensor
- 2.8mm fixed lens
- Max. IR LEDs Length 30m
- SMD Plus, Built in MIC
- Metal Casing, Micro SD memory, IP67, PoE

**Wiz Sense**

IPC-HDW3649H-AS-PV-ANZ  
6 MP Smart Dual Illumination Active Deterrence Camera



- 6MP, 1/2.7" CMOS image sensor, low illuminance
- 2.8mm/3.6mm fixed lens
- Built-in warm light and IR LED;
- Supports max. 256 G Micro SD card, built-in Mic
- 0.003 Lux@F1.0, IP67, PoE
- Red and Blue flashlight alarm

**Wiz Sense**

IPC-HDW3649H-AS-PV-ANZ-BLK  
6 MP Smart Dual Illumination Active Deterrence Camera



- 6MP, 1/2.7" CMOS image sensor, low illuminance
- 2.8mm/3.6mm fixed lens
- Built-in warm light and IR LED;
- Supports max. 256 G Micro SD card, built-in Mic
- 0.003 Lux@F1.0, IP67, PoE
- Red and Blue flashlight alarm

**Wiz Sense**

IPC-HDW3849H-AS-PV-ANZ-DH  
8 MP Smart Dual Illumination Active Deterrence Camera



- 8MP, 1/2.7" CMOS image sensor, low illuminance
- 2.8mm/3.6mm fixed lens
- Built-in warm light and IR LED;
- Intrusion, tripwire, SMD Plus
- Supports max. 256 G Micro SD card, built-in Mic
- Red and blue flashlight alarm, IP67, PoE

**Wiz Sense**

IPC-HDW3849H-AS-PV-ANZ-BLK  
8 MP Smart Dual Illumination Active Deterrence Camera



- 8MP, 1/2.7" CMOS image sensor, low illuminance
- 2.8mm/3.6mm fixed lens
- Built-in warm light and IR LED;
- Intrusion, tripwire, SMD Plus
- Supports max. 256 G Micro SD card, built-in Mic
- Red and blue flashlight alarm, IP67, PoE

**Wiz Sense**

## IPC-HFW2431S-S-S2-DH

4MP Lite IR Fixed-focal Bullet Network Camera



- 1/3" CMOS image sensor, low illuminance, high image definition
- H.265 codec, high compression ration, ultra-low bit rate
- 2.8mm,3.6mm Fixed lens
- Built-in IR LED, max IR distance: 30 m
- ROI, SMART H.264+/H.265+

## IPC-HFW2431T-ZAS-S2

4MP Lite IR Vari-focal Bullet Network Camera



- 1/3" CMOS image sensor, low illuminance, high image definition
- H.265 codec, high compression ration, ultra-low bit rate
- 2.8mm-3.6mm vari-focal lens
- Built-in IR LED, max IR distance: 60 m
- ROI, SMART H.264+/H.265+

## IPC-HFW2531T-ZS-S2

5MP Lite IR Vari-Focal Bullet Camera



- 1/2.7" 5Megapixel progressive scan CMOS
- Intelligent detection: Intrusion, tripwire
- 2.7mm~13.5mm varifocal lens
- Built-in IR LED, max IR distance: 60 m
- Micro SD memory, IP67, PoE

## IPC-HFW2831S-S-S2

8MP Lite IR Fixed-focal Bullet Network Cameraa



- 1/2.7" CMOS image sensor, low illuminance, high image definition
- H.265 codec, high compression ration, ultra-low bit rate
- 2.8mm,3.6mm Fixed lens
- Built-in IR LED, max IR distance: 30 m
- ROI, SMART H.264+/H.265+

## IPC-HFW3541EP-AS

5MP IR Bullet Camera



- 5MP, 1/2.7" CMOS image sensor, low illuminance
- 2.8mm,3.6mm Fixed lens
- Built-in IR LED, max. IR distance: 50 m
- Intrusion, tripwire, SMD Plus
- Supports max. 256 G Micro SD card, built-in Mic
- 0.005 Lux@F1.6, IP67, PoE

**Wiz Sense**

## IPC-HFW3541TP-ZAS

5MP IR Vari-Focal Bullet Camera



- 5MP, 1/2.7" CMOS image sensor, low illuminance
- 2.7mm-13.5mm motorised lens
- Built-in IR LED, max. IR distance: 60 m
- Intrusion, tripwire, SMD Plus
- Supports max. 256 G Micro SD card, built-in Mic
- 0.005 Lux@F1.6, IP67, PoE

**Wiz Sense**

## IPC-HFW3666EP-AS-AUS

6MP IR Bullet Network Starlight Camera



- 1/2.7" 6Megapixel progressive scan
- 2.8mm
- Max. IR LEDs Length 30m
- 0.005Lux/F1.6( Color,1/30s,30IRE)
- IP67, PoE, Built-in Mic,SMD 4.0, AI SSA

**Wiz Sense**

## IPC-HFW3666TP-ZAS-AUS

6MP IR Vari-focal Bullet WizSense Network Camera



- 1/2.7" 6Megapixel progressive scan
- 2.8mm
- Max. IR LEDs Length 60m
- 0.005Lux/F1.6( Color,1/30s,30IRE)
- IP67, PoE, Built-in Mic,SMD 4.0, AI SSA

**Wiz Sense**

## IPC-HFW3649T1-AS-PV-ANZ-BLK

6MP Smart Dual Illumination Active Deterrence Fixed-focal Bullet WizSense Network Camera



- 1/2.7" CMOS image sensor, low illuminance, high image definition
- H.265 codec, high compression ration, ultra-low bit rate
- 2.8mm-3.6mm vari-focal lens
- Built-in IR LED, max IR distance: 30 m
- ROI, SMART H.264+/H.265+

**Wiz Sense**

## IPC-HFW3866EP-AS-AUS

8MP IR Bullet Fixed-focal WizSense Camera



- 8-MP 1/2.8" CMOS image sensor
- 2.8mm;3.6 mm
- Max. IR LEDs Length 30m
- SMD4.0,AI SSA
- Metal Casing, IP67, PoE

**Wiz Sense**



## IPC-HFW3841T-ZS

8MP IR Bullet Vari-focal WizSense Camera

- 1/2.8" 8MP CMOS image sensor
- 2.7 mm–13.5 mm
- Max. IR LEDs Length 60m
- SMD Plus, Built in MIC
- Metal Casing, Micro SD memory, IP67, PoE



**Wiz Sense**

## IPC-HFW3866TP-ZAS-AUS

8MP IR Bullet Varifocal WizSense Camera

- 8-MP 1/2.8" CMOS image sensor
- 2.7 mm–13.5 mm
- Max. IR LEDs Length 60m
- SMD4.0,AI SSA
- Metal Casing, Micro SD memory, IP67, PoE



**Wiz Sense**

## IPC-HFW3849T1-AS-PV-ANZ

8MP Smart Dual Illumination Active Deterrence  
Fixed-focal Bullet WizSense Network Camera

- 8-MP 1/2.8" CMOS image sensor, low luminance, and high definition image.
- Outputs max. 8 MP (3840 × 2160)@25/30 fps.
- H.265 codec, high compression rate, ultra-low bit rate.
- Built-in warm light and IR LED; the max. IR illumination distance is 30 m and warm light distance is 30 m.



**Wiz Sense**

## IPC-HFW3849T1-AS-PV-ANZ-BLK

8MP Smart Dual Illumination Active Deterrence  
Fixed-focal Bullet WizSense Network Camera

- 8-MP 1/2.8" CMOS image sensor, low luminance, and high definition image.
- Outputs max. 8 MP (3840 × 2160)@25/30 fps.
- H.265 codec, high compression rate, ultra-low bit rate.
- Built-in warm light and IR LED; the max. IR illumination distance is 30 m and warm light distance is 30 m.



**Wiz Sense**



**SD22204T-GN**  
2MP 4x PTZ Network Camera



- 1/2.7" 2Megapixel CMOS
- Powerful 4x optical zoom
- Max. 25/30fps@1080P
- WDR, Day/Night(ICR), Ultra DNR
- Max 100°/s pan speed
- IP66, support PoE+,IVS

Trade Price  
**\$275**

**SD42212T-HN**  
2MP 12x Starlight PTZ



- 1/2.8" 2Megapixel STARVIS™ CMOS
- Powerful 12x optical zoom
- Support Triple-streams encoding
- Max. 25/30fps@1080P
- 5.3mm~64mm Motorised Lens
- Color: 0.005Lux@F1.6; B/W: 0.0005Lux@F1.6
- IP66,IK10, PoE+. Metal Casing

Trade Price  
**\$399**

**SD42C212T-HN**  
2MP 12x Starlight PTZ



- Recessed Mount
- 1/2.8" 2Megapixel STARVIS™ CMOS
- Powerful 12x optical zoom
- Support Triple-streams encoding
- Max. 25/30fps@1080P
- 5.3mm~64mm Motorised Lens
- Color: 0.005Lux@F1.6; B/W: 0.0005Lux@F1.6
- IK10, PoE+. Metal Casing

**SD1A404XB-GNR**  
4MP 4x Starlight IR WizSense Network PTZ Camera



- 1/2.8" 4 Megapixel STARVIS CMOS
- Powerful 4x optical zoom
- Face Detection, People Counting
- Max. 25/30fps@4MP
- IR distance up to 15m, SMD PLUS
- Max 100°/s pan speed
- IP66, IK08

**Wiz Sense**

**SD49225XA-HNR**  
2MP 25x Starlight IR WizSense PTZ



- 1/2.8" 2Megapixel Starvis CMOS
- Powerful 25x optical zoom, Color: 0.005Lux@F1.6
- Starlight technology,H.265 Encoding
- Max. 50/60fps@1080P , Lens :5.4mm~135mm
- IR Distance up to 150m
- SMD Plus, Support PoE+, IP67,IK10

**Wiz Sense**

**SD5A225XA-HNR**  
2MP 25x Starlight IR WizSense PTZ



- 1/2.8" 2Megapixel Starvis CMOS
- Powerful 25x optical zoom, Color: 0.005Lux@F1.6
- Starlight technology,H.265 Encoding
- Max. 50/60fps@1080P , Lens :5.4mm~135mm
- Auto-tracking and IVS
- IR Distance up to 150m
- SMD Plus, Support PoE+, IP67,IK10

**Wiz Sense**

Trade Price

**SD5A445XAN-HNR**  
4MP 45x Starlight IR WizSense PTZ



- 1/2.8" 2Megapixel Starvis CMOS
- Powerful 45x optical zoom, Color: 0.005Lux@F1.6
- Starlight technology,H.265 Encoding
- Max. 25/30fps@4MPP , Lens :3.95mm~177.7mm
- Auto-tracking and IVS
- IR Distance up to 150m
- SMD Plus, Support PoE+, IP67,IK10

**Wiz Sense**

**SD5A432XA-HNR**  
4MP 32x Starlight IR WizSense Network PTZ Camera



- 1/2.8" 4Megapixel STARVIS™ CMOS
- Powerful 32x optical zoom
- Max. 25/30 fps@4M
- IR distance up to 150 m
- Deep-learning-based auto tracking and perimeter protection
- SMD PLUS, PoE+
- IP67, IK 10, Face Detection

**Wiz Sense**

**SD6C3425XB-HNR-A-PV1-DH**  
4MP 25x Starlight IR WizSense



- 1/2.8" 4Megapixel STARVIS™ CMOS
- Powerful 25x optical zoom, Starlight technology
- IR distance up to 150 m
- Perimeter protection, Face detection
- Metadata, IP66
- Full-color illuminator; red and blue warning light
- Smart dual illuminators

**Wiz Sense**

**SD5A825GA-HNR**  
8MP 25x Starlight IR WizSense Network PTZ Camera



- 1/1.8" 8Megapixel CMOS.
- Powerful 25x optical zoom.
- Starlight+ Technology.
- Max. 25/30fps@8MP.
- IR distance up to 150 m.
- Deep-learning-based perimeter protection.
- Auto Tracking 3.0.
- SMD 4.0,Quick Pick,PoE+, IP67, IK 10

**Wiz Sense**

Trade Price

## KIT/DH-PFM378-B100-W+DH-IPC-HFW3241DF-AS-4G+P-FM372-L45-4S14P



- 1/2.8" 2MP 4G Camera
- 100W Solar Module
- MPPT Solar controller
- Lithium Iron Phosphate Battery
- Water proof structural Design

## ITC215-PW4I-IRLZF27135 -Australian License 2 MP Motorised Full HD WDR Access



- 1/2.8 inch 2Megapixel Progressive scan CMOS
- WDR, Day/Night(ICR), 3DNR,BLC, HLC
- Powerful 2.7-13.5mm motorized lens and IR light
- ideal for monitor ANPR distance as 3~8m
- Wide working temperature, IP67,IK10
- Superior performance for outdoor applications
- True WDR technology

## IPC-PFW8601-A180

### 3 x 2MP Multi-Lens Panoramic IR Bullet Camera



- 1/2.8" 2Megapixel progressive scan
- H.265/H.264 triple-stream encoding
- Support 180-degree panoramic view
- 3.6mm Fixed Lens
- Max. IR LEDs length 30m
- Smart detection, Intelligent Function
- Micro SD memory, IP67, IK10,PoE+

## IPC-EBW81242

### 12MP Panoramic Network IR Fisheye Camera



- 1/1.7" 12Megapixel progressive scan
- H.265/H.264 triple-stream encoding
- Max 25fps@12M(4000x3000)
- People Counting
- Smart detection, Intelligent Function
- Focal length 1.98mm, Max. IR LEDs length 10m
- Metal Casing, Micro SD memory, IP67, IK10, PoE

## PSDW81642M-A180-D440-S3

### 16 MP Multi-Sensor 180° Panoramic PTZ Hubble WizMind Network Camera



**Wiz Mind**

- AR panorama technology; various AR tags can be overlaid.
- Smart tracking, GPS/BDS positioning.
- Smart H265+/H264+ encoding.
- WDR, 3D NR, HLC, BLC, applicable to various monitoring scenes.

## IPC-PDBW82041-B360-S2

### 4 x 5 MP 4-Directional Panoramic Dome Wizmind Network Camera



**Wiz Mind**

- FlexStream: view 4 channels of images in 1 channel stream
- Web5.0 interface design, user-friendly and easy operation
- Built-in IR LED illuminator; max. illumination distance 30 m
- 3 in, 2 out alarm; 1 in, 1 out audio; RS-485; max. 256 G Micro SD card
- 12VDC/PoE power supply; 12VDC power output, max. current 165mA; easy installation
- IP67 and IK10 protection

## NVR4104HS-P-4KS2/L

4 Channel 4PoE NVR

- H.264 codec decoding
- Max 80Mbps Incoming Bandwidth
- Up to 8MP Resolution for Preview
- HDMI/VGA simultaneous video output
- Support IPC UPnP, 4PoE ports
- 1 Hard Disk Bay Up to 8 TB Capacity



## NVR4108HS-8P-4KS2/L

8 Channel 8PoE 4K NVR

- H.265/H.264 codec decoding
- Max 80Mbps Incoming Bandwidth
- Up to 8MP Resolution for Preview and Playback
- HDMI/VGA simultaneous video output
- Support IPC UPnP, 8PoE ports
- Support ANR to enhance the storage reliability.
- 1 Hard Disk bay Up to 8 TB Capacity



## NVR4108HS-8P-AI/ANZ -4TB

8 Channels Compact IU 8PoE 1HDD WizSense Network Video Recorder

- Smart H.265+/H.264+/MJPEG decoding format.
- Access, storage or forwarding at 256 Mbps
- Max. decoding capability: 16 × 1080p@30 fps
- Supports adaptive decoding.
- 4TB in-built Hard drive



**Wiz Sense**

## NVR4208-8P-AI/ANZ - 4TB

8 Channels 1U 8PoE 2HDDs WizSense Network Video Recorder

- Smart H.265+/H.264+/MJPEG decoding format.
- Access, storage or forwarding at 256 Mbps
- Max. decoding capability: 16 × 1080p@30 fps
- Supports adaptive decoding.
- 4TB in-built Hard drive



**Wiz Sense**

## NVR4216-16P-4KS2/L

16 Channel 1U 16PoE 4K NVR

- H.265/H.264 codec decoding
- Max 200Mbps Incoming Bandwidth
- Up to 8MP Resolution for Preview and Playback
- Up to 2ch@4K/8ch@1080P decoding
- HDMI/VGA simultaneous video output
- Support IPC UPnP, 16PoE ports



## NVR4216-16P-AI/ANZ - 4TB

16 Channels 1U 16PoE 2HDDs WizSense Network Video Recorder

- Smart H.265+/H.264+/MJPEG decoding format.
- Access, storage or forwarding at 256 Mbps
- Max. decoding capability: 16 × 1080p@30 fps
- Supports adaptive decoding.
- 4TB in-built Hard drive



**Wiz Sense**

## NVR5216-4KS2

16 Channel 4K NVR

- H.265/H.264/MJPEG/MPEG4 codec decoding
- Max 320Mbps incoming bandwidth
- Up to 12Mp resolution preview&playback
- HDMI/VGA simultaneous video output
- 2 Hard Disk Bay Up to 6 TB for each HDD



## NVR5216-16P-4KS2E

16 Channel 16PoE 4K NVR

- Up to 16 channel IPC input
- H.265/H.264/MJPEG/MPEG4 codec decoding
- Max 320Mbps incoming bandwidth
- Up to 12Mp resolution preview&playback
- HDMI/VGA simultaneous video output
- Support IPC UPnP, 16PoE ports
- 2 Hard Disk Bay Up to 6 TB for each HDD



## NVR5216-16P-I

16 Channel 16PoE AI NVR

- Up to 16 channel IPC input
- Smart H.265+/H.265/Smart H.264+
- Up to 16 Channel perimeter protection
- Up to 4 Channel video stream face recognition
- Up to 24 face pictures /sec processing
- Up to 20 face databases with 100,000 face images in total
- 1-8 PoE Ports support ePoE & EoC



## NVR5224-24P-4KS2

24Channel 24PoE 4K NVR

- Smart H.265+/H.265/Smart H.264+/H.264/MJPEG
- Max 320Mbps Incoming Bandwidth
- Up to 12MP Resolution for Preview and Playback
- Support IPC UPnP, 24 PoE ports
- 3D intelligent positioning with Dahua PTZ
- 4 Hard Disk Bay Up to 8TB for each HDD



## NVR5424-24P-4KS2 24Channel 24PoE 4K NVR

- Smart H.265+/H.265/Smart H.264+/H.264/MJPEG
- Max 320Mbps Incoming Bandwidth
- Up to 12MP Resolution for Preview and Playback
- Support IPC UPnP, 24 PoE ports
- 3D intelligent positioning with Dahua PTZ
- 4 Hard Disk Bay Up to 8TB for each HDD



## NVR5232-16P-4KS2 32CH 16PoE 4K NVR

- H.265/H.264/MJPEG/MPEG4 codec decoding
- Max 320Mbps incoming bandwidth
- Support IPC UPnP, 16PoE ports
- Up to 12Mp resolution preview & playback
- HDMI/VGA simultaneous video output
- 16 channel synchronous real-time playback
- 2 Hard Disk Bay Up to 6 TB for each HDD



## NVR5432-16P-4KS2 32 Channel 16PoE NVR

- H.265+/H.265/Smart H.264+/H.264/MJPEG
- Max 320Mbps Incoming Bandwidth
- Support IPC UPnP, 16PoE ports
- Up to 12MP Resolution for Preview and Playback
- 2 HDMI/VGA simultaneous video output
- 3D intelligent positioning with Dahua PTZ camera
- 4 Hard Disk Bay Up to 8TB capacity for each HDD



## NVR5432-16P-I 32 Channel 16PoE AI NVR

- Up to 32 channel IPC input Smart H.265+/H.265/Smart H.264+
- Up to 16 Channel perimeter protection
- Up to 4 Channel video stream face recognition
- Up to 24 face pictures /sec processing
- Up to 20 face databases with 100,000 face images
- 1-8 PoE Ports support ePoE & EoC



## NVR608-32-4KS2 32 Channel Super 4K NVR

- Max 32 channel IP cameras connection
- Max 384Mbps Incoming Bandwidth
- 1 VGA+2 HDMI
- Up to 12MP Resolution for Preview
- 8 Hard Disk Bay Up to 6TB for each HDD
- Support iSCSI to expand storage space
- Support RAID 0/1/5/6/10/50/60
- Support N+M hot standby



Trade Price

## NVR608-64-4K 64 Channel Super 4K NVR

- Max 64 channel IP cameras connection
- Max 384Mbps incoming bandwidth
- Up to 12Mp resolution preview& playback
- 1 VGA+2 HDMI
- Support RAID 0/1/5/6/10/50/60
- Support N+M hot standby
- Support iSCSI to expand storage space
- 8 Hard Disk Bay Up to 6TB for each HDD



Trade Price

## NVR608-128-4K 128 Channel Super 4K NVR

- Max 128 channel IP cameras connection
- Max 384Mbps incoming bandwidth
- Up to 12Mp resolution preview& playback
- 1 VGA+2 HDMI
- Support RAID 0/1/5/6/10/50/60
- Support N+M hot standby
- Support iSCSI to expand storage space.
- 8 Hard Disk Bay Up to 6TB for each HDD



## NVR616-128-4KS2 128CH 4K NVR

- Intel Processor
- Max 128 IP Camera Inputs
- Max 384Mbps Incoming Bandwidth
- Upto 12MP Resolution for Preview and Playback
- 16 Hard Disk Bay Up to 6TB for each HDD
- Supports RAID 0/1/5/6/10/50/60
- iSCSI and Mini SAS for Expanded Storage
- Smart Tracking and Intelligent Video





PFA100  
Mount Adapter



- Material: Aluminum
- Aesthetic design
- Mount Adapter

PFA101/102/103  
Mount Adapter



- Material: Aluminum
- Mount Adapter

PFA105/106/107  
Fisheye Adapter Plate



- Material: Aluminum
- Fish Eye Adapter Plate
- Neat & Integrated design.

PFA110  
Mount Adapter



- Material: Aluminum
- Aesthetic design
- Mount Adapter

PFA111  
Mount Bracket



- Material: Aluminum
- Mount Bracket

PFA113  
Ceiling Mount Bracket



- Material: Aluminum
- Mount Adapter
- Length : 42Cm

PFA117  
Ceiling Mount Bracket



- Material: Aluminum
- Mount Adapter
- Length : 78Cm

PFA120  
Water-proof Junction Box



- Material: Aluminum
- Aesthetic design
- Junction box

PFA121/PFA122  
Water-proof Junction Box



- Material: Aluminum
- Aesthetic design
- IP66 junction box

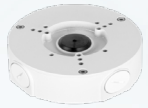
PFA123  
Water-proof Junction Box



- Material: Aluminum
- Aesthetic design
- IP66 junction box

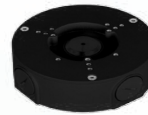


PFA130-E  
Junction Box



- Material: Aluminum & SECC
- Junction Box

PFA130-E BLACK  
Junction Box



- Material: Aluminum & SECC
- Junction Box

PFA134  
Water-proof Junction Box



- Material: Aluminum & SECC
- Junction Box

PFA135/136/137/138  
Water-proof Junction Box



- Material: Aluminum.
- Water-proof Junction box.

PFA137 BLACK  
Water-proof Junction Box



- Material: Aluminum.
- Water-proof Junction box.

PFA139  
Water-proof Junction Box



- Material: Aluminum.
- Water-proof Junction box.

PFA150  
Pole Mount Bracket



- Material: SECC
- Pole Mount Bracket

PFA151  
Corner Mount Bracket



- Material: SECC
- Corner Mount Bracket

PFA200W  
Rain Shade of Dome Camera



- Material: Aluminum & SGCC
- Rain shade of camera, with junction-box

PFA152-E  
Pole Mount Bracket



- Material: Aluminum & SUS304
- Pole Mount Bracket

**PFB200C**  
In-ceiling Mount Bracket



- Material: SECC & PC
- In-ceiling Mount Bracket

Trade Price

**PFB203W/PFB204W/Black**  
Wall Mount Bracket



- Material: Aluminum
- Junction Box
- Water-proof

Trade Price

**PFB205W**  
Wall Mount Bracket



- Material: Aluminum
- Junction Box
- Water-proof

Trade Price

**PFB110W**  
Wall Mount Bracket



- Material: Aluminum
- Wall Mount/Plane Mount/Ceiling Bracket
- Wall Mount/Plane Mount/Ceiling Mount Bracket

Trade Price

**PFB210W**  
Water-proof Wall Mount Bracket



- Wall mount bracket,
- Material: Aluminum.
- Safety rope hook

Trade Price

**PFB220C**  
Ceiling Mount Bracket



- Material: Aluminum
- Ceiling Mount Bracket
- Length : 76cm

Trade Price

**PFB300C**  
Ceiling Mount Bracket



- Material: Aluminum
- Ceiling Mount Bracket
- Length : 23.5Cm

Trade Price

**PFB302S**  
Wall Mount Bracket



- Material: Aluminum
- Wall Mount Bracket
- Junction box function

Trade Price

**PFB303S**  
Parapet Mount Bracket



- Material: Aluminum
- Parapet Mount Bracket

Trade Price

**PFB600W/PFB604W**  
Housing Bracket



- Material: Aluminum
- Junction Box
- Water-proof

Trade Price

## PFL2106-4ET-96 4-Port ePoE Switch



- Supports long distance PoE transmission upto 800Mtrs with ePoe
- 1\*100/1000 Base-X, 1\*10/100/1000 Base-T
- 4\*10/100 Base-T(PoE power supply)
- Port1,2,3≤30W, Port4≤60W, Total≤96W
- Suitable SFP Module PFT3950,PFT3960

## PFS3005-4ET-36 4-Port PoE Switch



- Two-layer PoE Ethernet switch
- 1\*10/100 Base-T
- 4 \* 10/100 Base-T (PoE power supply)
- Supports Hi-PoE (36 W)

## PFSS3006-4ET-60 4-Port PoE Switch



- Layer 2 Commercial PoE Ethernet switch
- 2 \* 10/100 Mbps Uplink Ports
- 4 \* 10/100 Base-T (PoE power supply)
- Supports Hi-PoE (60 W)
- up to 250m

## PFS3010-8ET-96 8-Port Fast Ethernet PoE Switch



- Layer two commercial switch
- RJ45 port supports 10/100/1000 Mbps
- Supports Hi-PoE 60W
- Supports DC 48-57V power supply

## PS5081G 8-Port Full Gigabit Unmanaged



- 8 10/100/1000Mbps PoE RJ45 port(port 1~port 8)
- 1 10/100/1000Mbps Non-POE RJ45 port(port 9)
- Total power:60W
- Single port max 30Watt

## PFS4026-24ET-370 24-Port PoE Switch



- Layer 2 management PoE switch
- PoE budget: 370W
- 2\*10/100 Base-T
- 24\*10/100 Base-T (PoE power supply)
- Support one-key recovery of IP address & user password

## PFS4226-24ET-240 24-Port PoE Switch



- Layer 2 management PoE switch
- PoE budget: 240W
- Support PoE, PoE+, Hi-PoE
- 2\*10/100/1000 Base-T (Combo port)
- 2\*1000 Base-X (Combo port)
- 24\*10/100 Base-T (PoE power supply)
- Orange port' support Hi-PoE

## PFS4226-24ET-360 24-Port PoE Switch



- Layer 2 management PoE switch
- PoE budget: 360W
- Support PoE, PoE+, Hi-PoE
- 2\*10/100/1000 Base-T (Combo port)
- 2\*1000 Base-X (Combo port)
- 24\*10/100 Base-T (PoE power supply)
- Orange port' support Hi-PoE

## PFS4428-24GT-370 24-Port PoE Gigabit Managed Switch



- Layer 2 network management PoE switch
- 24\*10/100/1000 Base-T(PoE power supply)
- 4\*1000 Base-X
- PoE Power Consumption : Total≤370W
- Power : AC 100~240V

## TL-SF1005D TP-LINK 5 Port Switch

- 5 10/100Mbps Auto-Negotiation RJ45 ports, Supports Auto MDI / MDIX
- Green Ethernet technology saves power consumption
- IEEE 802.3x flow control provides reliable data transfer
- Plastic case, desktop design
- Plug and play, no configuration required



## TL-SF1008D TP-LINK 8 Port Switch

- 8 10/100Mbps auto-negotiation RJ45 ports, supports auto MDI/MDIX
- Green Ethernet technology saves power consumption
- IEEE 802.3x flow control provides reliable data transfer
- Plastic case, desktop design
- Plug and play, no configuration required



## TL-SG1005D TP-Link 5 Port Gigabit Desktop Switch

- 5 Gigabit Auto-Negotiation RJ45 ports, Supports Auto MDI / MDIX
- Green Ethernet technology saves power consumption
- IEEE 802.3x flow control provides reliable data transfer
- Plastic case, desktop or wall-mounting design
- Plug and play, no configuration required



## TL-SG1008D TP-Link 8 Port Gigabit Desktop Switch

- 8 Gigabit Auto-Negotiation RJ45 ports, Supports Auto MDI / MDIX
- Green Ethernet technology saves the power up to 80%
- IEEE 802.3x flow control provides reliable data transfer
- Plastic case, desktop or wall-mounting design
- Plug and play, no configuration required



Trade Price

## TL-SG1016 V16 16-Port Gigabit Rackmount Switch

- 16 10/100/1000Mbps RJ45 ports
- Innovative energy-efficient technology saves power consumption
- Supports MAC address self-learning and auto MDI/MDIX
- Standard 19-inch rack-mountable steel case



## TL-SG1024 V14 24-Port Gigabit Rackmount Switch

- 24 10/100/1000Mbps RJ45 ports
- Innovative energy-efficient technology saves power consumption
- Supports MAC address self-learning and auto MDI/MDIX
- Standard 19-inch rack-mountable steel case



## 4GI Dual-SIM WIFI ROUTER

- Convenient configuration and maintenance interface
- Smart Link, network switching
- Provide rapid Security Deployment
- Support Local and Remote Firmware Upgrade
- Support APN/VPDN



## TL-WA850RE 300Mbps Universal Wi-Fi Range Extender

- IEEE 802.11b, IEEE 802.11g, IEEE 802.11n
- One 10/100Mbps Ethernet Port (RJ45)
- Range Extender Button, Reset Button
- 2\*internal
- About 3W



## TL-RE205 AC750 Wi-Fi Range Extender

- 1 10/100Mbps RJ45 Port
- Button: WPS Button, RESET Button
- Antenna: 2 External Antennas
- Power Consumption: 6.4W



## TL-MR6400 TP-LINK 4G MODEM

- Share your 4G LTE network with multiple Wi-Fi devices and enjoy download speeds of up to 150 Mbps
- >Wireless N speeds of up to 300 Mbps
- >Integrated antennas provide stable wireless connections



## WD Purple Surveillance Hard Disk 1TB



- Supports up to 180 TB/yr workload rate<sup>7</sup>
- Support for up to 16 bays<sup>13</sup>
- Tarnish-resistant components<sup>2</sup>
- 3-year limited warranty
- Lower power consumption

## WD Purple Surveillance Hard Disk 2TB



- Supports up to 180 TB/yr workload rate<sup>7</sup>
- Support for up to 16 bays<sup>13</sup>
- Tarnish-resistant components<sup>2</sup>
- 3-year limited warranty
- Lower power consumption

## WD Purple Surveillance Hard Disk 3TB



- Supports up to 180 TB/yr workload rate<sup>7</sup>
- Support for up to 16 bays<sup>13</sup>
- Tarnish-resistant components<sup>2</sup>
- 3-year limited warranty
- Lower power consumption

## WD Purple Surveillance Hard Disk 4TB



- Supports up to 180 TB/yr workload rate<sup>7</sup>
- Support for up to 16 bays<sup>13</sup>
- Tarnish-resistant components<sup>2</sup>
- 3-year limited warranty
- Lower power consumption

## WD Purple Surveillance Hard Disk 6TB



- Supports up to 180 TB/yr workload rate<sup>7</sup>
- Support for up to 16 bays<sup>13</sup>
- Tarnish-resistant components<sup>2</sup>
- 3-year limited warranty
- Lower power consumption

## WD Purple Surveillance Hard Disk 8TB



- Supports up to 180 TB/yr workload rate<sup>7</sup>
- Support for up to 16 bays<sup>13</sup>
- Tarnish-resistant components<sup>2</sup>
- 3-year limited warranty
- Lower power consumption

## WD Purple Surveillance Hard Disk 10TB



- Supports up to 180 TB/yr workload rate<sup>7</sup>
- Support for up to 16 bays<sup>13</sup>
- Tarnish-resistant components<sup>2</sup>
- 3-year limited warranty
- Lower power consumption



## LA-707S-KIT

### 7" Analogue Video Slim Intercom



- 7" Photo in built memory Indoor Monitor
- Night vision outdoor station
- Connect upto 4 monitors + 2 door stations,
- Gate control, 4 wire system over CAT5e

## KTA02

### 7" Analogue Video Intercom



- 7" TFT screen
- Unlock, voice call, video call, volume adjustment
- 2 door stations + 3 indoor monitors
- Multiple bell sounds
- Supports digital wide dynamic range (DWDR)

## KTA02M

### 7" Analogue Video Intercom



- 7" TFT screen
- Unlock, voice call, video call, volume adjustment
- doorway monitoring
- 2 door stations + 3 indoor monitors
- Multiple bell sounds
- Supports digital wide dynamic range (DWDR)

## KTA03M

### 7" Analogue Video Intercom



- 7" TFT screen
- Unlock, voice call, video call, volume adjustment
- doorway monitoring
- 2 door stations + 3 indoor monitors
- Multiple bell sounds
- Supports digital wide dynamic range (DWDR)
- Take Snapshots

## LA-707M

### 7" Analogue Indoor Monitor



- 7" Indoor Monitor
- Gate release control, Max 4 monitors
- 4 wire system over CAT5e 14.5VDC

## LA-707S

### Slim Outdoor Station



- Analogue Outdoor Station for LA-707S-KIT
- Metal vandal resistance,
- Night vision outdoor station
- Max 2 door stations
- 4 wire system over CAT5e

## LA-708M

### 7" Analogue Indoor Monitor



- 7" color indoor monitor
- -Touch Buttons
- -Support 32gb TF
- -Video recording & Playback function

## DH-KTP-02 VTO2111D-VTH2421FB(W)-P 7" IP KIT



- HD CMOS camera
- Large field of view angle
- Night vision
- Voice indication
- Remote intercom with mobile APP
- Surface mounted
- IP65, Support 8GB SD card
- Includes standard 4 Port PoE Switch

## DHI-KTP03 VTO2111D-VTH2621G(W) -P IP KIT



- HD CMOS camera
- Large field of view angle
- Night vision
- Voice indication
- Remote intercom with mobile APP
- Surface mounted
- IP65, Support 8GB SD card
- Includes standard 4 Port PoE Switch

## DH-KTP01L(S)-AUS VTO2201F+VTH2421FW-P IP Villa KIT



- 2MP CMOS camera, Mechanical Button
- Night Vision & Voice Indicator
- 160° angle of view , Group call
- IP Indoor Monitor, High performance
- Embedded 8GB SD card, surface mount
- Includes standard 4 Port PoE Switch

## DH-KTP01L(F)-AUS VTO2201F+VTH2421FW-P IP Villa KIT



- 2MP CMOS camera, Mechanical Button
- Night Vision & Voice Indicator
- 160° angle of view , Group call
- IP Indoor Monitor, High performance
- Embedded 8GB SD card, Flush mount
- Includes standard 4 Port PoE Switch

## KTD01 2-wire IP Villa Door Station



- Anodized aluminum front panel
- CMOS low illumination 2MP HD colorful 160° fisheye camera
- Compatibility 2-wire Interface & RJ45 Interface
- IK07&IP65
- Support H.265

## VTO2101E-P IP Villa Outdoor Station



- HD CMOS camera
- Zinc alloy panel, IP65, IK10
- ICR Night vision & Voice indication
- Video & Audio messaging
- TCP/IP, SIP
- Surface mounted

## VTO2111D - WP 1MP Wi-Fi Villa Outdoor Station



- HD CMOS camera
- Large field of view angle
- Night vision
- Voice indication
- Remote intercom with mobile APP
- Surface mounted

## VTO2201F-P IP Villa Door Station



- CMOS low illumination
- 2MP HD colorful 140° camera
- Mechanical Buttons
- Night Vision & Voice Indicator
- Support standard PoE

## VTO3221E-P Villa Outdoor Station



- Keyboard villa door station
- Supplemental lighting with white light
- 2MP CMOS camera
- Door release via password and Mifare card
- Aluminium alloy plate, IK08, IP65
- Support standard PoE

## VTO1220BW Apartment Outdoor Station



- HD CMOS camera
- Aluminum panel, IP54
- Night vision & Voice indication
- Local card opening
- Video & Audio messaging

**VTH1560B/BW**  
7- inch Indoor White / Black Monitor



- 7" TFT Capacitive touch screen
- IPC surveillance
- Embedded 4GB SD card
- Record & Snapshot

**VTH2621G(W)-WP**  
Wi-Fi Indoor White / Black Monitor



- 7" TFT Capacitive touch screen, 1024x600
- IPC surveillance
- Micro SD card optional, max 32GB
- Support 8GB SD card
- Standard PoE, WiFi

**VTH2621G(W)-P**  
Wi-Fi Indoor White / Black Monitor



- 7" TFT Capacitive touch screen, 1024x600
- IPC surveillance
- Micro SD card optional, max 32GB
- Support 8GB SD card
- Support Standard PoE

**VTH2421FB(W)-P**  
Digital VTH



- 7" TFT Capacitive touch screen, 1024 x 600
- IPC surveillance
- Alarm integration
- High performance & Cost-effective
- Embedded 8GB SD card
- Support standard PoE

**Trade Price**

**VTH5222CH-S1**  
2-Wire IP Indoor Monitor



- 7" TFT Capacitive touch screen
- IPC surveillance (VTNS1006A-2 needed)
- Alarm integration
- Micro SD card optional, max 32GB
- Record & Snapshot (SD card needed)

**VTH5341G-W**  
Android 10-Inch Monitor



- Android 8.1
- More User-Friendly UI
- Ethernet and Wi-Fi
- 10" TFT Capacitive touch Screen, 1024x600
- Micro-SD Card optional, max 256GB

## VTM115 Flush Mount



- Material:AL5052 t=2.0mm
- Dimensions: 129.0mm×95.0mm×28.5mm (5.08"×3.74"×1.12)

## VTM114 Surface Mount



- Material:ADC12
- Dimensions(Front) : 128.9mm×162.9mm×34.5mm (5.08"×6.42"×1.36")
- Dimensions(rear) : 123.0mm×157.0mm×35.0mm (4.84"×6.18"×1.38")
- Wall Opening Dimensions: 113.0mm×149.0mm×35.0mm (4.45"×5.87"×1.38"), 123.0mm×157.0mm×35.0mm (4.84"×6.18"×1.38")

## VTM116-01 Flush Mount



- Material:ADC12
- Dimensions(Front) : 138.0mm×240.0mm×35.0mm (5.43"×9.45"×1.38")
- Dimensions(rear) : 120.8mm×222.7mm×33.0mm (4.76"×8.77"×1.30")
- Wall Opening Dimensions: 120.8mm×222.7mm×33.0mm (4.76"×8.77"×1.30")

## VTM117 Surface Mount



- Material:ADC12
- Dimensions: 97.0mm×199.0mm×29.0mm (3.82"×7.83"×1.14")

## VTM22A Angle Bracket



- Horizontally inclined bracket for VTO1000J Door Station
- Horizontal angle 15° and supports combination(2brackets maximum)

## VTOB107 Flush Mounted Box



- Material: Metal
- Size: 125mm\*135mm\*56mm
- Weight: 0.8 Kg
- Flush mounted box

## VTOB102 Flush Mounted



- Material: Plastic
- Size: 126mm\*389mm\*71mm
- Weight: 0.5 Kg
- Flush mounted box

# RACKS

## 4RU 300 - Server Cabinet



- 4U 4RU 19" Wall Mount Rack Cabinet 300mm Deep

## 4RU 450 - Server Cabinet



- 4U 4RU 19" Wall Mount Rack Cabinet 450mm Deep

## 4RU 600 - Server Cabinet



- 4U 4RU 19" Wall Mount Rack Cabinet 600mm Deep

## 6RU 300 - Server Cabinet



- 6U 19" Wall Mount Rack Cabinet 300mm Deep

## 6RU 450 - Server Cabinet



- 6U 6RU 19" Wall Mount Rack Cabinet 450mm Deep

## 6RU 600 - Server Cabinet



- 6U 6RU 19" Wall Mount Rack Cabinet 600mm Deep

## 9RU-450 - Server Cabinet



- 9U 9RU 19" Wall Mount Rack Cabinet 450mm Deep

## 9RU-600 - Server Cabinet



- 9U 9RU 19" Wall Mount Rack Cabinet 450mm Deep

## 12RU-450 - Server Cabinet



- 12U 12RU 19" Wall Mount Rack Cabinet 450mm

## 12RU-600 - Server Cabinet



- 12U 12RU 19" Wall Mount Rack Cabinet 600mm

\*Prices are exclusive of GST | All prices & Specifications are subject to change without notice.



# RACKS

## 15RU-450 - Server Cabinet



- 15U 15RU 19" Wall Mount Rack Cabinet 450mm

## 15RU-600 - Server Cabinet



- 15U 15RU 19" Wall Mount Rack Cabinet 600mm

## 18RU-450 - Server Cabinet



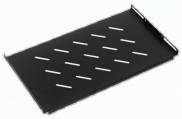
- 18U 18RU 19" Wall Mount Rack Cabinet 450mm

## 18RU-600 - Server Cabinet



- 18U 18RU 19" Wall Mount Rack Cabinet 600mm

## Fix Shelf 450mm Deep



- Suitable for installation in 450mm deep server racks and cabinets
- Fits most rack configurations
- Easy to install and use

## Fix Shelf 600mm Deep



- Suitable for installation in 600mm deep server racks and cabinets
- Fits most rack configurations
- Easy to install and use

## PFC200D-6U4D -DH DAHUA 19 6U RACK CABINET



- 19" 6 RU Rack Cabinet
- Removable side panel
- Cable entry on the top cover and bottom panel
- 600mmx450mmx372mm(W x D x H)

## 1RU 8 PORT POWER RAIL 10AMP



- 1 RU 8 port power rail 10amp with on/off switch and overload

## Cat-6 Patch Panel - 24Port



- 24 x CAT6 Keystone jacks

\*Prices are exclusive of GST | All prices & Specifications are subject to change without notice.

# COMFAST & UBIQUITI

## CF-E312A V2 Point-to-Point Bridge



- Supports IEEE 802.11n/b/g wireless standards
- Up to 300Mbps wireless transmission rate

## CF-E350N Professional Business Wireless Ceiling AP



- IEEE 802.11a/b/g/n/ac
- Dual-band 2.4GHz/5GHz
- Up to 1300Mbps
- Internal Omni-directional antenna
- WPA2-PSK/WPA-PSK/WEP/802.1x

## CF-E355AC V2 WiFi Access Point



- IEEE 802.11ac/a/b/g/n
- Frequency Range: 2.4 GHz/5 GHz
- Data Rate: Up to 1200 Mbps
- Antenna: 2 x 5dBi External Antennas
- Encryption: WPA/WPA2

## CF-E375AC V2 Indoor Access point



- IEEE 802.11ac/a/b/g/n
- 2.4GHz/5GHz
- 2.4GHz: 300Mbps, 5GHz: 867Mbps
- 20dBm (Max)
- 4x External 5dBi omni-directional antennas

## CF-E390AX WiFi 6 Ceiling Access Point



- 802.11ax/ac/n/a/g/b
- 2.4GHz & 5GHz
- 2x2 MIMO Internal Antennas, 2.4GHz 5dBi & 5GHz 6dBi
- 574Mbps at 2.4GHz & 2400Mbps at 5GHz

## CF-WR758AC V2 1200M Wireless Repeater Wifi Range Extender



- IEEE 802.11b/g/n/ac
- 2.4GHz & 5GHz
- 1200Mbps
- 2 x 5dBi External Antennas

## U6-LITE UBIQUITI Access Point U6 Lite



- Dimensions: 6.5 x 6.5 x 1.4 inches
- Weight: 0.8 lbs
- Antennas: 2x2 MIMO (2T2R)

## NS- 5ACL UBIQUITI Nanostation Loco AC



- Dimensions 257 x 84 x 41 mm
- Power Supply (PoE) 24V, 0.5A
- Gain 16 dBi
- 10/100/1000 Ethernet Port
- Frequency 5 GHz
- Output Power 27 dBm

## U6-LR UBIQUITI Access Point U6 Long-Range



- Dimensions: Ø220 x 48 mm (Ø8.66 x 1.89")
- Weight: Without mount: 800 g

\*Prices are exclusive of GST | All prices & Specifications are subject to change without notice.

# MONITORS & ACCESSORIES

DHL-22-L200  
21.5" FHD Monitor



- Industrial level LCD panel, suitable for continuous 24/7 operation
- Physical resolution of 1920x1080
- HDMI, VGA

DHI-LM24-F200  
24" LCD Monitor



- Ultra-narrow bezel, Anti-glare elegant appearance, ultra-light base
- VESA Wall Mount

DHI-LM28-F400  
24" LCD Monitor



- Ultra-narrow bezel, Anti-glare elegant appearance, ultra-light base
- VESA Wall Mount

DS-D5022FN-C  
22" Monitor Hikvision



- Ultra-thin device body with ultra-thin border for 3 sides.
- 2 channels of 8 bit/10 bit LVDS HD (1920\*1080) display.
- 178° ultra-wide view screen.

24" Phillips V Line  
Full HD LCD monitor



- VLine
- 24 (23.8" / 60.5 cm diag.)
- 1920 x 1080 (Full HD)

H 8183  
Flat Screen Ceiling



Trade Price

**\$70**

VESA Bracket

VESA Wall Mount Bracket



HDMI 4K Cables



HDMI - 0.3M	
HDMI - 0.5M	
HDMI - 1M	
HDMI - 1.5M	
HDMI - 2M	
HDMI - 3M	
HDMI - 5M	
HDMI - 10M	

HDMI Cables



HDMI - 0.5M	
HDMI - 2M	
HDMI - 3M	
HDMI - 5M	
HDMI - 10M	
HDMI - 15M	
HDMI - 20M	

HDMI-EX-30(HDC30)  
HDMI Extender - 30Mtrs



- Plug and Play, no setup required
- CAT5e or CAT6 Connections
- Transmission Distance up to 30m
- Supports 1080p Full HD
- No additional power required

HDMI-EX-60 with IR(HDC6IRA)



- IR repeater included can be bi-directional
- HDMI 1.3, HDCP 1.4, 1080p resolution max.
- Transmits 1080p@60Hz HDMI signal up to 60m
- single UTP (CAT-5E and CAT-6) to transmit 1-ch HDMI video signal
- Power over Cable from Transmitter runs the Receiver and Transmitter from just 1 power supply

\*Prices are exclusive of GST | All prices & Specifications are subject to change without notice.

# MONITORS & ACCESSORIES

## HDMI-EX-70 -4K



- Sends 4K or 1080p@60Hz Video Signals up to 70 metres
- Embedded Multi-Channel Audio & HDCP 1.4
- Built-in Electronic Display Identification
- Efficient Power over Cable (PoC) Design

## LA-HDMI-EX-50 HDMI Extender - 50Mtrs



- Sends 4K or 1080p@60Hz Video Signals up to 50 metres

## HDMI Splitter - 2Port 1 Inputs & 2 Output



- Offers 2 HDMI outputs with 1 HDMI input

## HDTCPPIRS HDMI Extender over TCP IP - 100Mtrs



- Input voltage DC5V, only supply for transmitter
- Real-time transmission HDMI video signal
- Transmit one-way infrared remote control signal
- Use single UTP (CAT-5E and CAT-6) to transmit 1-ch HDMI video signal

## HDMI - Female Joiner



- Used to connect two HDMI cables together

## HDMI Splitter - 4Port 1 Inputs & 4 Output



- Offers 4 HDMI outputs with 1 HDMI input

## HDMI - Wall Plate Insert



- Wall Plate Mechanism Premium HDMI 10cm Tail

## HDMI Switch 4 Inputs & 1 Output



- Offers 1 HDMI outputs with 4 HDMI inputs

## ASC1202C

### Two Door Two Way Access Controller

- Support 100,000 valid cards & 150,000 records
- Support multiple cards
- Support card, password, fingerprint and combination
- TCP/IP interface to PC
- Wiegand or RS-485 interface to readers(2 door)
- Anti-pass back, multi-door interlock, multi-card open
- Support 128 efficient time and holiday schedules

## ASC1204C-S/ ASC1204C-D

### Four Door Access Controller

- Support 100,000 valid cards & 150,000 records
- Support multiple cards
- Support card, password, fingerprint and combination
- TCP/IP interface to PC
- Wiegand or RS-485 interface to readers(2 door)
- Anti-pass back, multi-door interlock, multi-card open
- Support 128 efficient time and holiday schedules

## ASR1101M

### Vandal-proof RFID Reader



- Wiegand26/34 bits RS-485 protocol
- 13.56MHz(Mifare)
- All-metal buttons with blue backlight
- Red and Green indicator LEDs
- Watch dog function ensure device free from halting
- Surface mounted installation

## ASI1201A

### RFID Standalone Controller



- Touch keyboard and LCD display
- Support 30,000 valid cards & 150,000 records
- Support multiple cards(default IC card)
- All-metal buttons with blue backlight
- Support card, password and combination
- Wiegand or RS-485 interface to reader
- TCP/IP to PC

## ASI1212D

### Water-proof Fingerprint Standalone Controller



- Touch keyboard and LCD display
- Support 30,000 valid cards & 150,000 records
- Support multiple cards(default IC card)
- Support card, password, fingerprint and combination
- Wiegand or RS-485 interface to reader
- Software attendance

## ASR1100B

### Water-proof RFID Reader



- Wiegand26/34 bits RS-485 protocol
- 13.56MHz(Mifare)
- Water-proof design
- Red and Green indicator LEDs
- Watch dog function ensure device free from halting
- Surface mounted installation

## ASR1100A

### RFID Reader



- Wiegand26/34 bits RS-485 protocol
- 13.56MHz(Mifare)
- Red and Green LEDs
- Watch dog function ensure device free from halting
- Beep Buzzer and LED indicator
- Surface mounted installation

## ASR1201D

### Slim Water-proof RFID Reader + Keypad



- RS485, Wiegand34/26 protocol
- 13.56MHz(Mifare)
- Red and Blue LEDs
- Watch dog function ensure device free from halting
- Water-proof(Outdoor use)
- Surface/Flush mounted installation

## ASR1200D

### Slim Water-proof RFID Reader



- RS485, Wiegand34/26 protocol
- 13.56MHz(Mifare)
- Red and Blue LEDs
- Watch dog function ensure device free from halting
- Water-proof(Outdoor use)
- Surface/Flush mounted installation

Trade Price

## ASR1101A

### RFID Reader



- Wiegand26/34 bits RS-485 protocol
- 13.56MHz(Mifare)
- Red and Green LEDs
- Sensitive touch keypad with blue backlight
- Watch dog function ensure device free from halting
- Beep Buzzer and LED indicator
- Surface mounted installation

## ASM100

### Card Enrollment Reader



- Default IC (Mifare) card
- No driver installation, plug and play
- USB power supply and communication
- Beep and indicator

Trade Price



## STouch2S



- Slim Line Metal structure
- 125KHz and 13.56MHz dual-band antenna
- Standalone mode, anti-pass back mode: wiegand input
- Reader mode: wiegand output, LED
- Input Voltage:DC12~24V,Idle Current:≤50mA
- Fully potted process, IP68
- Product Dimension:160 \* 45 \* 26mm

## STouch2



- Metal structure
- 125KHz and 13.56MHz dual-band antenna
- Standalone mode, anti-pass back mode: wiegand input
- Reader mode: wiegand output, LED
- Input Voltage:DC12~24V,Idle Current:≤50mA
- Fully potted process, IP68
- Product Dimension:145 \* 83 \* 26mm

## sKey 2



- All-metal Password standalone access control/reader
- 125KHz and 13.56MHz dual-band antenna
- Standalone mode, anti-pass back mode: wiegand input
- Reader mode: wiegand output
- Input Voltage:DC12~24V,Idle Current:≤50mA
- Fully potted process, IP68
- Product Dimension:170 \* 83 \* 26mm

## sTouch W-S



- All-metal Password standalone access control/reader
- 125KHz and 13.56MHz dual-band antenna
- Standalone mode, anti-pass back mode: wiegand input
- Input Voltage:DC12~24V,Idle Current:≤50mA
- Fully potted process, IP68
- Product Dimension:170 \* 83 \* 26mm

## sTouch W-W



- waterproof, fully potted, confirms to IP65
- Built-in 125KHz (EM&HID card) reader
- Card reader type: EM,HID,IC,CPU
- Door bell function
- Input Voltage:DC12~24V,Idle Current:≤35mA
- Product Dimension:125 \* 83 \* 21.7 mm

## B6K2-EHPLUS



- Metal Waterproof Keypad & RFID Access Control
- 125KHz and 13.56MHz dual-band antenna
- Access mode: card; PIN, card+PIN
- User capacity: 20000; Manager cards max:21pcs
- Wiegand 26 to 34 can be settled
- Working Voltage: AC/DC10~28V
- Fully potted process, IP68
- Product size: 135 \* 58 \* 26 mm

## W3-C



- Metal Waterproof Keypad & RFID Access Control/Reader
- Backlight keypad, convenient for operating in night
- Card Type: 125KHz EM, PIN length: 4~8 digits
- Wiegand 26 input & output
- User capacity: 20000; Manager cards max:21pcs
- Working Voltage: AC/DC10~28V
- Fully potted process, IP65
- Product size: 128 \* 82 \* 28 mm

## sPad WiFi



- WIFI exit button
- Mobile phone open door remotely
- capacitive touch keypad to open door
- Access to the internet via WiFi router
- Adopt mobile phone APP manage the device and user
- Can open the door by using Amazon Alexa or Google Home voice
- Product size: 86 \* 86 \* 12 mm

## MF1ICS50 IC Card



- 13.56MHZ - Card

## Mifare KeyFob



- 13.56MHZ - Fob

## F01 - Door Bell



- Sebury Electric Wire Doorbell 12v Door Bell Chime for sTouch W-S & sTouch W-W Access Control Systems

**SE-8N0S - Monitored**  
Fail Safe Heavy Duty Door Strike



- Designed to prevent unauthorized access.

**ES1101**  
Lockwood Padde



- IP56 Weather resistant
- Fail safe/fail secure changeable on site
- Stainless steel striker for extra strength and durability

**ES1501**  
Lockwood Padde Series Surface



- Mounted Electric Strike

**ES200-1**  
Lockwood Padde Series Surface



- UnMonitored Fire Rated Electric Strike

**ES2000-1**  
Lockwood Padde Series Surface



- Monitored Fire Rated Electric Strike

**SB70HR**  
Flush Exit Button



- NC/NO Contacts, Rated: 5Amp @ 250V, Blue backlight

**SB70HM**  
Mushroom Exit Button



- NC/NO Contacts, Rated: 2Amp @ 250V,

**SACP22W**  
Emergency Resettable Door Release



- Emergency Resettable Door Release

**AW100001**  
Press to Exit Button



- 1.8mm thick 304 stainless steel plate
- Stainless Steel push button
- Blue LED indicator
- NO/NC/COM
- 12V DC

## Solution 2000 Basic Kit with Boxed or Combo Siren



- Contains 8 Zone Panel with Metal enclosure
- Icon Keypad,
- Battery, Plug Pack
- Screamer
- Boxed/combo siren

## Solution 2000 GEN 2 PIR with Boxed or Combo Siren



- Contains 8 Zone Panel with Metal enclosure
- Icon Keypad, Screamer
- Battery, Plug Pack
- 2 X PIR
- Boxed/combo siren

## Solution 3000 Basic Kit with Boxed or Combo Siren



- Contains 8 Zone Panel with Metal enclosure
- Icon Keypad,
- Battery, Plug Pack
- Screamer
- Boxed/combo siren

## Solution 3000 GEN 2 PIR with Boxed or Combo Siren



- Contains 8 Zone Panel with Metal enclosure
- Icon Keypad, Screamer
- Battery, Plug Pack
- 2 X PIR
- Boxed/combo siren

## Solution 6000 Basic Kit with Boxed or Combo Siren



- Contains 16 Zone Panel with Metal enclosure
- Graphic Keypad,
- Battery, Plug Pack
- Screamer
- Boxed/combo siren

## Solution 6000 GEN 3 PIR Kit with Boxed or Combo Siren



- Contains 16 Zone Panel with Metal enclosure
- Graphic Keypad, Screamer
- 3 X PIR
- Battery, Plug Pack

## MW300 / MW350



- Bosch empty enclosure box
- MW300 Suits solution 2000/3000/6000

MW300

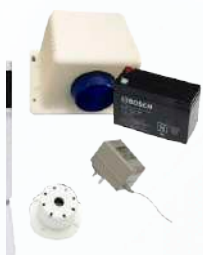
MW350

## Combo Kit K0011



- Combo siren, Strobe, screamer, plug pack and battery

## Boxed Siren Kit K0007



- Box siren, Strobe, screamer, plug pack and battery



## ICP-SOL2-P Control panel PCBA, 8-zone

- 8 Fully Programmable Zones-
- 41 Codes – 1 Installers, 20 User Codes, 20 RF Keyfobs
- 16 Wireless Devices (on Solution 2000)
- Partitionable into 2 Separate Areas
- STAY / AWAY Arming Options



## ICP-SOL3-P Control panel, 16-zone

- 16 Fully Programmable Zones
- 41 Codes – 1 Installers, 20 User Codes, 20 RF Keyfobs
- 16 Wireless Devices (on Solution 3000)
- Partitionable into 2 Separate Areas
- STAY / AWAY Arming Options



## B426-M Ethernet Communication Module

- For Solution 2000/3000
- Full two-way IP event reporting
- Encrypted Line Security
- Plug and Play installation, including UPnP service to enable remote programming behind firewalls
- Advanced configuration by browser, RPS, or A-Link



## B308 Octo-output Module

- Programmable output functions
- Easy to read switch addressing
- Provides eight Form C relays
- 1 A at 24 VDC relay contact rating
- Allows remote control of outputs



## IUI-SOL-ICON

- Icon Keypad for Solution 2000/3000
- Single button arming of alarm system
- Fire, medical and panic alarms
- Clear and easy to use



## IUI-SOL-TEXT

- Text Keypad for Solution 2000/3000
- Separate mounting plate base and chassis design
- Available with English function keys or icon function keys
- 3-line LCD display with up to 18 characters



## IUI-SOL-TS5

- Touchone 5" codepad
- To suit Solution 2000/3000



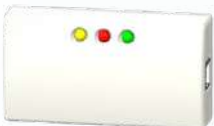
## IUI-SOL-TS7

- Touchone 7" codepad DD12
- To suit Solution 2000/3000



## IUI-SOL-ADAPTER

- Direct Link Adapter For SOLUTION 880/844/2000/3000



## CM444B Relay Card

- 2 amp relay card for solution 6000





## CM707B Plug On Zone Expander



- Provide an additional 8 hard wired zone inputs
- Bringing the CM705B to 16 hard wired zone inputs for Alarm
- 4 state monitoring or Single EOL configurations

## CM705PB Universal LAN Zone Expander



- Solution 6000
- Universal LAN zone expander module
- PCB only, 8 Inputs, 4 Outputs
- 1 amp power @ 12VDC
- Requires TF008-B plug pack & TB100103 battery

## CM720B 1-Amp LAN Power Supply



- LAN Power Supply,
- 1A + battery charger
- Suits Solution 6000 panel
- Requires 1x TF008-B Plug Pack & 1x TB100103 Battery

## CM751B IP Ethernet module



- Ethernet Module for Solution 6000
- Operate outputs and areas remotely
- Dynamic and fixed IP address support
- Conetrix and CSV-IP reporting formats

## CM710B Output Expansion Module



- Solution 6000
- Output expansion module
- 4 way relay
- Suits Solution 6000

## CM195 Multi Receiver Interface



- Provides increased wireless coverage
- Multi vendor wireless capable
- Module Status and Receiver status LEDs
- Separate tamper input

## CM797B LAN Isolator Module & Isolated P/S



- Helps eliminate earth loops in the LAN cabling
- Improves surge immunity and protects LAN sections from faults and tampering.

## CM704B 8/16 Zone Expansion Module



- LAN or locally powered
- Status and Zone Power LEDs
- Service code pad connection
- Separate tamper input
- Automatic recognition by panel

## CM796B Wiegand to RS485 LAN interface Module



- Industry standard Wiegand readers to connect to Solution 6000

## CM910 DIRECT LINK Flash Programmer For SOLUTION 6000



- Direct Link/Flash Program Lead,
- USB, Suits Solution 6000





## SW500B Bosch Software



- SolutionLink Remote Access Software for Solution control panels.
- Suits Solution 6000

## SW501B Bosch Software



- Site Manager Software
- USB, End user software to control Solution 6000
- Interactive control of doors & outputs,

## CM255B Solution Panel Unlock Key



- 6000 Default master & installer codes only
- 16i, 16+, & 64 Full default

## CM439B USB Desktop Reader- DF Smart Cards



- Solution Link
- Site Manager
- Suitable to Bosch 6000

## CP732B



- Solution 6000, Key pad + Smart Prox RS485
- Alphanumeric LCD, 144 zone, BLACK, Touch tone & backlit keys
- Adj volume, backlight & contrast

## CP741B



- Wifi Graphic Keypad to suit Solution 6000

## CP736B 3.5" Colour keypad - S/C



- Customizable Installer banner display
- 3.5" Color graphical display with LED backlight
- 40bit MiFare smart card reader built-in
- Alpha-numeric text prompting/programming

## CP737B 3.5" Colour keypad - S/C, Wi-Fi



- Customizable Installer banner display
- 3.5" Color graphical display with LED backlight
- 40bit MiFare smart card reader built-in
- Alpha-numeric text prompting/programming
- 802.11 b/g/n Wi-Fi connectivity built-in

## CP156 External Metal Keypad



- Suitable for Indoor and Outdoor use.
- Stylish Vandal Redidtant Metal Construction.
- Weather Resistant to IP67.
- Durable Satin Chrome Plated Zinc Die-Cast Finish.

## CP155B External keypad



- Suitable for Indoor and Outdoor use.
- Stylish and weather resistance to IP65
- Built in Smart-Card reader



## PR370 Combined Smart & Prox Card Fob



- Suit for solution 6000
- Can be programmed to turn the alarm on and off with one swipe.

## PR350 Proximity Card



- Solution 6000 Smart Card Keypads or Smart Card Readers.

## PR115B External Black Slim Solution 6000



- Easily adds access control capability to Solution 6000 panels.
- LAN Readers can be configured to provide system area control, door access control or both.

## PR301 Smart Card Fob



- Solution 6000 Smart Card Keypads

## Bosch Plug Pack



- Bosch plug pack 18.5 VAC 1.5Amps

## Roller Door Reed Switch



- Heavy Duty Roller door reed switch

## End on End Reed Switch AL-03C



- 10mm End on End Reed Switch
- 19mm long x9.5mm Dia.
- 20mm gap

## S-Switch RW Surface Reed Switch-reed switch



- Mini Stick on Reed Switch Stick on or screw mountable, 30mm gap, Dimensions :33H x13W x7D

## Architrave Panic Switch



- Architrave Panic Switch

## NESS 3G/4G DAILLER



- Plug-and-go operation - no programming required
- Antenna with magnetic base supplied long cable allows the unit to be installed in a secure housing



## CM723B

LAN power supply and battery charger



- 5Amp continuously rated
- 13.8V DC
- Charges 2x 7.2AH batteries or 1x 18Ah battery
- LAN supervised on Solution 6000 panels

## Bosch-Quad-PIR



- ISC-BPQ2-W12
- Blue Line Gen 2 Quad PIR
- 12M Range with Look-down Zone

## Bosch-Tri-PIR



- ISC-BDL2-W12G
- Blue Line Gen 2 TriTech PIR 12M Range with Lookdown Zone

## Bosch-Tri-Pet-PIR



- ISC-BDL2-WP12G
- Blue Line Gen 2 TriTech Pet Immunity(45KG) PIR
- 12M Range with Lookdown Zone

## DS-9360 360-Quad-PIR



- 360 Degree Quad PIR
- 20M dia, 3.6m Height

## DS936 Panoramic PIR Detector



- Enhanced signal processing
- 360° x 7.5 m (24 ft.) pattern
- Surface/semi-flush mountable
- Internal pointability
- sealed detector chamber

## Swan Quad PIR



- Dual Element Sensor Motion Detector - 12 meters range. For Domestic Use.

## RFPR-12



- RADION Wireless PIR with Pet Immunity up to 30lbs (13kg)

## Bosch-S-PIR Pet-Friendly Standard PIR



- ISC-BPR2-WP12
- Blue Line Gen 2 PET-FRIENDLY Standard PIR
- Pet-Friendly Standard PIR, up to 20kg

## Bosch-S-PIR



- ISC-BPR2-W12
- Blue Line Gen 2 Standard PIR
- 12M Range with Look-down Zone



## B338 Universal Ceiling Mount Bracket



- Universal Bosch ceiling Bracket

## EAP-15TC 360° Dual Tech



- Ceiling Mount 360° PIR & Microwave Detector
- Pet Immunity up to 20KG, Power Supply 9-16VDC, Current Draw 15mA @ 12VDC,
- Installation Height 2.4 - 4.8 meters
- Six meter radius detection, Adjustable sensitivity

## XP-456 Glass Break detector



- Microprocessor based acoustic diagnostics
- Two colour LED display, Alarm Lock Mode
- Distance 9 meters high sensitivity or 5 meters low sensitivity, Power Supply 12VDC
- Current Draw 20mA

## S6122 Screamer, Internal flush mount



- Screamer, Internal flush mount, 110dB @ 1m, 12V DC, 90mA

## 2012/24AUS Photoelectric smoke detector



- Smoke-Alarm, SYSTEM SENSOR
- Photoelectric, Smoke-Alarm with Sounder & Backup Battery

\* Non battery smoke alarm

## HS-101DY- WHITE Reed Switch AL-03L - BROWN



- 3/4 inch or 19mm end on end reed switch

HS-101DY

AL-03L

## Alarm Battery



- 12 Volt 7 Amp Alarm Battery

## Bosch Screamer



- 105 dB Top Hat Internal Siren,
- 12VDC @ 150mA

## Combo Siren



- Weather resistant
- LED Strobe
- Tamper switch

## Box Siren



- Weather resistant
- LED Strobe
- Tamper switch

WE800EV2 KIT



- Remote kit with 2 remotes & receiver PCB module for Solution 2000/3000/844

HCT-4

4 Button Remote 433Mhz Stainless Steel Finish



- Spare remote to suit WE800E V2KIT/2000/3000

B810 Wireless Receiver



- RADION receiver SD, 433Mhz; Suits Solution 3000 and HCT4UL fobs only

RFRC-STR2 Radion Receiver



- Wireless Bosch Receiver;
- Suits solution 6000;

RFGB Radion Wireless Glass Break



- Wireless Glass Break Detector

RFDW-SM

Radion Wireless Surface Mount Door Window Contact Reed



- Wireless Surface Mount Door/Window Contact with Reed Switch

RFSM Wireless Smoke Detector



- RFSM Wireless Smoke Detector

RFUN

Radion Wireless Universal Transmitter Reed



- Universal Wireless Transmitter with Magnetic Reed Switch

HCT-4UL

Radion Wireless 4 Button Keyfob Remote



- Spare remote to suit RF3212E & B810 Receiver & solution 6000

RFDW - RM

Radion Wireless Flush Mount Door/Window Contact Reed



- Self-contained transmitter with magnetic reed switch contact
- Concealed, recessed mounting in doors or windows for unobtrusive security
- Supervised for low-battery and cover-tamper conditions





## Bosch 3000 Premium KIT



- Suits Solution 3000
- 1X B810 Radion Receiver
- 2X HCT-4UL 4 BUTTON KEY FOB

## 3000 DELUXE-FOBKIT KIT



- Suits Solution 3000
- 1X B810 Receiver
- 2X RFKF-FB 4 BUTTON KEY FOB

## Bosch 6000 Premium KIT



- Suits Solution 6000
- 1X RFRC- STR2 Radion Receiver
- 2X HCT-4UL 4 BUTTON KEY FOB

## 6000 DELUXE-FOBKIT KIT



- Suits Solution 6000
- 1X RFRC- STR2 Radion Receiver
- 2X RFKF-FB 4 BUTTON KEY FOB

## PM24-4G 4G, GPRS and IP communicator



- Plug & Play solution
- Interfaces with any alarm panel using Contact ID or approved serial

## PM45-4G 4G Alarm communicator



- Remote alarm panel Upload/Download available using GPRS/3G/IP
- Dual SIM + IP alarm communicator,
- Plug & Play solution,
- Interfaces with any Contact ID alarm panel,

## RFPB-TB Wireless panic transmitter, 2-button



- Water and dust resistant
- Sends panic alarms by user for unique identification
- Two-button version, reduces false activations

## RFPB-SB Wireless panic transmitter, 1-button



- Water and dust resistant
- Sends panic alarms by user for unique identification
- Single-button version, reduces false activations

## RFKF-FB Wireless key fob, 4-button



- Four Button
- Water and dust resistant
- Arm, disarm and panic functions
- Assigned by user for accurate reporting of open close signals

## RFKF-TB Wireless key fob, 2-button



- Two Button
- Water and dust resistant
- Arm, disarm and panic functions
- Assigned by user for accurate reporting of open close signals

## R8 - Vertex Kit



- 1 x Hills Reliance 8
- 1 x 12V 4.5AMP Battery
- 1 x MEPS 16V-1.5 AMP Plug Pack
- 1 x Vertex 8 Zone LED Code pad

## R8 - Complete Kit



- 1 x Hills Reliance 8
- 1 x 12V 4.5AMP Battery
- 1 x MEPS 16V-1.5 AMP Plug Pack
- 1 x Vertex 8 Zone LED Codepad
- 1 x Combo Siren and Strobe
- 1 x Piezo Screamer top hat style
- 3 x RX-40QZ

## R12 - Vertex Kit



- 1 x Hills Reliance 12
- 1 x 12V 7AMP Battery
- 1 x MEPS 16V-1.5 AMP Plug Pack
- 1 x Vertex 16 Zone LED Code pad

## R12 - Complete Kit



- 1 x Hills Reliance 12
- 1 x 12V 7AMP Battery
- 1 x MEPS 16V-1.5 AMP Plug Pack
- 1 x Vertex 8 Zone LED Codepad
- 1 x Combo Siren and Strobe
- 1 x Piezo Screamer top hat style
- 3 x RX-40QZ

## R128 - Vertex Kit



- 1 x Hills Reliance 128
- 1 x 12V 7AMP Battery
- 1 x MEPS 16V-1.5 AMP Plug Pack
- 1 x Vertex 16 Zone LED Code pad

## R128 - Complete Kit



- 1 x Hills Reliance 128
- 1 x 12V 7AMP Battery
- 1 x MEPS 16V-1.5 AMP Plug Pack
- 1 x Vertex 8 Zone LED Codepad
- 1 x Combo Siren and Strobe
- 1 x Piezo Screamer top hat style
- 2x RX-40QZ

## NX-1516



- HILLS Vertex 16 Zone LED Codepad

## NX-1508



- HILLS Vertex 8 Zone LED Codepad

## NX-148 LCD Keypad



- Large backlit LCD display codepad
- Full alpha-numeric LCD display
- Customised text control up to 8 areas

## R8 Warranty Board NX-4V2-DAS

## R12 Warranty Board NX-6V2-DAS

## R128 Warranty Board

## Comnav PCB



- Remote access and control via smartphone and built-in web server
- Email, SMS and Voice notifications

## Pet Immune Detector OPTEX MX-40PTC DT



- 12m x 12m coverage pattern
- Spherical Lens Design
- Sealed Optics ECO Technology
- Temperature Compensation
- Anti-crosstalk technology

## RX-40QZ Optex Quad Detector



- Quad Zone Logic – Improved Patented Technology
- Spherical Lens – Technology to Back Up Quad Zone Logic

## Combo Siren S1799



- 12VDC Standard Combination Strobe and Siren, Uv Treated



PIEZO SCREAMER TOP HAT STYLE S3807

S4314 12V 5AMP Sealed Lead Acid Battery



RECESSED INTERNAL PIEZO S3103



S4312 12V 7AMP Sealed Lead Acid Battery

## FA3 WALL & CEILING BRACKET



- Attractive appearance for commercial use
- Highly constructed design that allows for use in long term setups
- Lightweight size that allows for easy handling and positioning onto any flat wall surface

## S4402

T1615DAS 16V AC 1.5Amp Earthed Plug Pack



## S1890A Remote Kit



- Standard capacity: 25 remotes
- Mounting plate provided for quick receiver installation

## S1896A Spare Remote



- Reliance 4 Button Remote Only (Must be paired with Activor Receiver - S1890A)

# CABLES

## Owire 4 Core 7\*0.2 305Mtrs



- 4 Core 7/0.2mm Alarm Cable, 300Mtrs, CCA

## Owire 4 Core 14\*0.2 305Mtrs



- 4 Core 14/0.2mm Alarm Cable, 300 Mtrs, CCA

## Owire Cat6 UTP(BC) - Blue-305M



- CAT6 Bare Copper Cable
- Blue: 305 meters

## Owire Cat6 UTP(CCA) - 305M Black/Orange/Grey/Yellow/Blue



- CAT6 CCA Cable
- 305 meters

## MC74WH300BW

Multi-Conductor, 7/0.20 mm, 4 Core, PVC, 300M



- 4 Core -7/020 300M
- Security cable 4 core
- Available in 100 and 300 meters

## MC76WH300BW

Garland Multi-Conductor, 7/0.20 mm, 6 Core, PVC, 300M



- 6 Core 07/020
- Security cable 6 core

## MC144WH100W

Multi-Conductor, 14/0.20 mm, 4 Core, PVC, 100M



- 4 Core 14/020
- Security cable 4 core
- 100 meter box

## UTPL5EBL305BW Cat5E - Garland



- Garland CAT5E Cable
- Blue: 305 meters

## Cat6 Garland



- Cat6 Garland
- Blue: 305 meters

## RG59 Composite



- Cable RG59 85% Braid with Power Cord 200M,
- Pull Box Fig. 8 With 2x7/0.37BC
- Copper Conductors insulated.
- Available in 100Mtrs and 200Mtrs

100 Mtrs Trade Price

200 Mtrs Trade Price

\*Prices are exclusive of GST | All prices & Specifications are subject to change without notice.

# CABLES

UTPL5EJF305R  
LAN Cable 4 Pair Cat5e UTP jel filled 305M



- UTPL5EJF305R
- CAT5E UTP 4 Pair under ground jelly black 305m

PFM920I-5EUN-C-DH  
Dahua 305m UTP CAT5E Cable



- 305m UTP CAT5E
- Max.100m long distance PoE supply
- 99.99% OFC(oxygen free copper) Excellent material
- Environmentally friendly PVC

PFM920I-6UN-C-DH  
Dahua 305m UTP CAT6 Cable Blue



- 305m UTP CAT6
- Max.100m long distance PoE supply
- 99.99% OFC(oxygen free copper) Excellent material
- Environmentally friendly PVC

RG59 Coax Cable



- Coaxial cable Low Loss
- RG59 75ohm, 100 meters

RG6Q Cable  
Coax RG6 Quad Shield 305m Drum, Black



- RG6Q Cable
- RG6 Quad Shield Cable
- 305 meters box

DNA 16 Gauge Speaker Cable Purple – 100 Metres



- 16 Gauge Purple speaker cable
- Strands: 2 x 48\*0.15mm / 0.85mm<sup>2</sup>
- Outer diameter: 3.0mm x 2
- Colour: Grey

AERIAL INDUSTRIES Speaker Cable 12 AWG 50M



- 12 Gauge Wire
- Copper Clad Aluminum Cables
- Plastic Drum Spool 50 Metre Reel

AERIAL INDUSTRIES Speaker Cable 14 AWG 100 M



- 14 Gauge Wire
- Copper Clad Aluminum Cables
- Plastic Drum Spool 100 Metre Reel

Patch cord Cat5e  
Colors : Blue



- CAT5e Cable
- Length : 0.5 meter

Patch cord Cat6  
Colors : Blue/ Black/Yellow/Pink



0.25M	\$2.00
0.5M	\$2.50
1M	\$3.20
2M	\$4.10
3M	\$5.00

\*Prices are exclusive of GST | All prices & Specifications are subject to change without notice.



**PLB141M**  
TV Wall Mount Bracket for 23"-55" TV, Max Load 50kg



- 23"-55" up to 50kg wall mount TV bracket

**PLB44**  
TV Wall Mount Bracket - FIXED- VESA 400x400 32-55 Inch to 80kg Profile 22mm



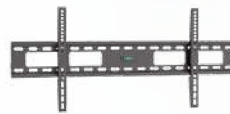
- TV Wall Mount Bracket FIXED VESA 400x400 32"-55" up to 80kg Profile 22mm

**PLB34L**  
TV Wall Mount Bracket Fixed VESA 600x400 37-70 Inch to 75kg



- TV Wall Mount Bracket FIXED VESA 600x400 37"-70" up to 75kg

**PLB36**  
TV Wall Mount Bracket FIXED VESA 800x400 37"-70" up to 75kg



- TV Wall Mount Bracket FIXED VESA 800x400 37"-70" up to 75kg

**PLB47**  
TV Wall Mount Bracket TILT VESA 600x400 37"-70" up to 80kg



- TV Wall Mount Bracket TILT VESA 600x400 37"-70" up to 80kg

**PLB37**  
TV Wall Mount Bracket TILT VESA 800x400 37"-70" up to 75kg



- TV Wall Mount Bracket TILT VESA 800x400 37"-70" up to 75kg

**PLB52**  
TV Wall Mount Bracket FIXED VESA 900x600 60"-100" up to 100kg



- TV Wall Mount Bracket FIXED VESA 900x600 60"-100" up to 100kg

**PLB170M-SW**  
TV Wall Mount Bracket Rotate-VESA 200- 23-55" to 30kg



- 23" – 55" up to 30kg Full motion Wall mount

**PLB51**  
TV Wall Mount Bracket TILT VESA 1000x800 60"-100" up to 100kg



- TV Wall Mount Bracket TILT VESA 1000x800 60"-100" up to 100kg

**PLB26**  
TV Wall Mount Bracket FIXED VESA 600x400 37-80" to 45kg – 20mm Wall Profile



- TV Wall Mount Bracket FIXED VESA 600x400 37-80" to 45kg – 20mm Wall Profile

**LP6363**  
TV Wall Mount Bracket FULL MOTION VESA 800x600 50"-90" up to 50kg



- TV Wall Mount Bracket FULL MOTION VESA 800x600 50"-90" up to 50kg

**LP6551**  
TV Wall Mount Bracket – Full Motion -VESA 600x400, 50kg Load Capacity, 510mm Extension.



- TV Wall Mount Bracket – Full Motion -VESA 600x400, 50kg Load Capacity, 510mm Extension.

**LPA50443**  
TV Wall Mount Bracket -Full Motion VESA 400x400 23-55" up to 35kg



- TV Wall Mount Bracket -Full Motion VESA 400x400 23-55" up to 35kg

**LPA50223**  
TV Wall Mount Bracket -FULL MOTION 3-Point SWIVEL – VESA 200x200 13-42" up to 20kg



- TV Wall Mount Bracket -FULL MOTION 3-Point SWIVEL – VESA 200x200 13-42 Inch to 20kg

**CE182043**  
Ceiling TV Mount 32 to 70 Inch to 50kg VESA 400x400 max



- Universal TV Ceiling Mount 32 to 70 Inch to 50kg

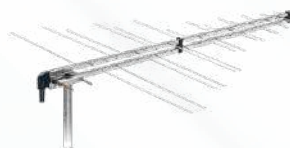
# TV ANTENNAS & ACCESSORIES

LP3F VHF  
Log Periodic Antennas



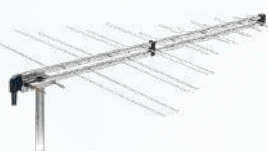
- Antenna Log Periodic Band 3 F Type 9dB Gain

LP345F4  
Log Periodic TV Antenna



- Antenna Log Periodic Band 3 F Type 9dB Gain

LP345F  
Log Periodic TV Antenna



- Log Periodic Band 3 VHF 9dBi Gain TV Antenna

LP345F700  
Log Periodic TV Antenna



- Log Periodic VHF/UHF 9.5/11.5dBi Gain TV Antenna with 4G/5G Rejection

TERZA6HD  
VHF TV Antenna



- 6 Element Band 3 Yagi VHF 11dBi Gain TV Antenna

SIGMA6HD LTE700  
TV Antenna 6 Element VHF Sigma



- 6 elements Loop Yagi UHF band aerial with F connector.

TRMTILE  
Tile Roof Mount-Black



- Black Tile Roof Mount with Galvanised 1.2 Metre Mast

TRMTILEGR  
Tile Roof Mount- Grey



- Grey Tile Roof Mount with Galvanised 1.2 Metre Mast

TRMIRON  
Tin Roof Mount-Black



- Grey Tripod Iron Roof Mount with Galvanised 1.2 Metre Mast

TRMIRONGR  
Tin Roof Mount- Grey



- Grey Tripod Iron Roof Mount with Galvanised 1.2 Metre Mast

\*Prices are exclusive of GST | All prices & Specifications are subject to change without notice.

# TV ANTENNAS & ACCESSORIES

**14BGMGAL**  
Gutter Mount - 1 Piece



- Antenna Gutter Mount 2 Piece

**14BGMGAL2**  
Gutter Mount - 2 Piece



- Antenna Gutter Mount 2 Piece

**14BCFB15**  
Antenna Curved Fascia Bracket 1.5m



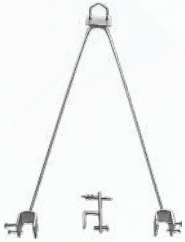
- 1.7m in length
- 25mm diameter
- Weight: 1.5kg
- 25mm diameter

**14BRMGAL**  
Rafter Mount Tube



- 6ft / 1.8m long Mount with 1.2mm tube and end cap
- Generous mounting holes for installation on rafter

**14ASMTW**  
Stramit Roof Mount Wide Foot



- Suits Stramit or Brownbuilt clamp-down flat decking
- Suits masts up to 40mm in diameter
- Hot dip galvanised steel
- Foot width 32mm

**14ATPPOLE**  
Stramit Roof Mount Pole



- Stramit Roof Mount Pole

**SP2T1P**  
TV Splitter 2-WAY



- Splitter 2 Way 5 to 2400MHz Diode Steer All Ports Power Pass AERIAL INDUSTRIES

**SP3T1P**  
TV Splitter 3-WAY



- Splitter 3 Way 5 to 2400MHz Diode Steer All Ports Power Pass AERIAL INDUSTRIES

**SP4T1P**  
TV Splitter 4-WAY



- Splitter 4 Way 5 to 1000MHz 1 Port Power Pass AERIAL INDUSTRIES

**SP6T1P**  
TV Splitter 6-WAY



- Splitter 6 Way 5 to 1000MHz 1 Port Power Pass AERIAL INDUSTRIES

\*Prices are exclusive of GST | All prices & Specifications are subject to change without notice.

# TV ANTENNAS & ACCESSORIES

SP8T1P  
TV Splitter 8-WAY



- Splitter 8 Way 5 to 1000MHz 1 Port Power Pass AERIAL INDUSTRIES

SP1275FP  
TV Splitter 12-WAY



- Splitter 12 Way 1 Port Power Pass AERIAL INDUSTRIES

SP1675FP  
TV Splitter 16-WAY



- Splitter 16 Way 1 Port Power Pass Aerial Industries

AFI112LTE700  
TV Amplifier 1 Input 35dB VHF



- Distribution Amplifier 35dB Gain 1 Input VHF UHF Lte Filter FRACARRO

PS12DCP  
Power Supply 12V DC 250mA PAL Injector



- PAL Male to Female, 12V DC 250mA 3VA max supply

AIMA224E  
TV Amplifier 2 Input 24dB UHF



- Masthead Amplifier 2 Inputs 24dB UHF 20dB VHF Gain 12V DC Channel 51 Lte Filter

AIMA236E  
TV Amplifier 2 Input 36dB UHF



- Masthead Amplifier 2 Inputs 36dB UHF 20dB VHF Gain 12V DC Channel 51 Lte Filter



# TOOLS

## HT-352 Universal Cable Stripper



- RG59/6/7/11, UTP/STP
- 2-Blade,Adjustable
- 2-Blade Coax / Twisted Pair / Wire Stripper

## HT-106E 9” Non-Interchangeable Hex Coax Crimper



- Hex crimp with fixed die-set works on various coax connectors.
- Full-cycle ratchet ensures consistent and reliable termination.

## DL806J Hexagon Crimp Tool RG6 RG11 Heavy Duty



- Hexagon crimp tool Heavy Duty
- 12.0mm/.472”, 9.18mm/.361”
- Suits 11mm, RG6RG59 and 13.5mm RG11 connectors.

## HT-H548A1 Compression Crimping Tool For F Type connectors



- Ideal for Voice / Data / Video preparation and installation.

## DL807 Compression Tool for RG59 & RG6



- Adjustable RG59 & RG6 linear compression tool
- includes converters
- fully adjustable.
- 19cm long.

## HT-318 Economical UTP/STP Stripper and Punch Down Tool



- 110Type Terminal
- Portable,w/Cable Stripper
- Non-Impact Punch Down Wire Mini stripper

## Amdex T-T001A Termination Tool

- Punch-Down Tools



## HT-2008AR 4P 6P 8P DEC Ratchet, Parallel Precision Professional Modular Plug Crimper



- Parallel crimp action with precision crimp dies performs accurate aligned termination result.
- Integrated round / flat cable stripper and cutter for cable preparation.

## T-T010TH Crimp Tool-PassThrough-AMDEX

- 6 & 8 Position Crimp Tool



## FP-JACK C5E & FP-C6-005 Speed Termination Hand Tool for Amdex Jacks



- Speed Termination Hand Tool for Amdex Jacks

\*Prices are exclusive of GST | All prices & Specifications are subject to change without notice.

# ACCESSORIES

BNC connector -screw type



- BNC MAle Plug
- F Female Jack

FC7008C  
RG6 Dual Quad Push on Fast Fit F Connector



- Universal Push On F connector for RG6 Dual and Quad shield coaxial cable

FC7002C  
RG6 Hex Crimp F Connector



- Universal 11mm

FC7022  
RG6 Quad Compression F Connector



- RG6 Quad Compression F Connector FOXTEL

FC7000C/FC7013C  
RG6 Universal Compression F Connector



- RG6 Universal Compression F Connector AERIAL INDUSTRIES

FC7008B  
RG59 Push on Fast Fit F Connector



- RG6 Quad Compression F Connector FOXTEL

HS/ FC7016/5  
RG11 Low Profile F Crimp Connector



- RG11 Low Profile F Crimp Connector 5 PACK

HS/ FC7023/5  
RG11 Quad Compression F Connector Foxtel



- RG11 Quad Compression F Connector Foxtel

HS/FC7002C/10  
RG6 Hex Crimp F Connector



- RG6 Hex Crimp F Connector 10 PACK

HS/ FC7008C/10  
RG6 Dual Quad Push on Fast Fit F Connector



- Universal Push On F connector for RG6 Dual and Quad shield coaxial cable 10PACK

\*Prices are exclusive of GST | All prices & Specifications are subject to change without notice.

# ACCESSORIES

HS/FC7013C/10  
RG6 Universal Compression F Connector



- RG6 Universal Compression F Connector AERIAL INDUSTRIE 10 PACK

HS/ FC7022/10  
RG6 Quad Compression F Connector



- RG6 Quad Compression F Connector FOXTEL 10 PACK

EC7001  
Adapter PAL Male Crimp RG59 Universal 11mm Connector



- RG6 Universal Compression F Connector AERIAL INDUSTRIE 10 PACK

CAT5e RJ45 Connector



- Male-to-Female Connector

50 pack

20 pack

TV Low Loss F Connector



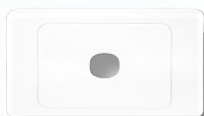
- low loss F typeCoaxial cable joiners

WPBULLNOSEW  
Wall Plate Bullnose White



- Opening 65mm wide x 30mm deep.
- Easy to install
- Provides a neat and tidy finish
- Suitable for both internal and external use
- Allows cables to be easily run through the wall

WPC-1  
Wall Plate Premium 1 Gang



- Wall Plate Premium 1 Gang

WPC-2  
Wall Plate Premium 2 Gang



- Wall Plate Premium 2 Gang

WPC-3  
Wall Plate Premium 3 Gang



- Wall Plate Premium 3 Gang

WPC-4  
Wall Plate Premium 4 Gang



- Wall Plate Premium 4 Gang

\*Prices are exclusive of GST | All prices & Specifications are subject to change without notice.

# ACCESSORIES

WPC-6  
Wall Plate Premium 6 Gang



- Wall Plate Premium 6 Gang

WPMCFFFA  
Wall Plate Mechanism F - F FOXTEL



- Wall Plate Mechanism F - F FOXTEL Approved No. F10448 Blue

WPRPS02  
Wall Plate Recessed for Wall Plates and 2 Punch Out Ports



- Recessed flush mounting wall plate box with 2 knock-out ports for mech inserts.
- Hole cut out 166 x 100mm, including two blanking inserts.
- Enables close-to-the-wall appliance installation.

WPRPS01  
Wall Plate Recessed with GPO and Punch Out Side Hole



- Installing a 240V mains power outlet that is approved with a 24mm cable pass-through knock-out (optional)
- Ensuring a snug fit for appliances
- Compatible with standard studs and most plaster brackets

WPSL-1  
Original 1 Gang Switch Plate



- 73mm (W) x 118mm (H)

WPSL-2  
Original 2 Gang Switch Plate



- 73mm (W) x 118mm (H)

WPSL-3  
Original 3 Gang Switch Plate



- 73mm (W) x 118mm (H)

WPSL-4  
Original 4 Gang Switch Plate



- 73mm (W) x 118mm (H)

WPSL-5  
Original 5 Gang Switch Plate



- 73mm (W) x 118mm (H)

WPSL-6  
Original 6 Gang Switch Plate



- 73mm (W) x 118mm (H)

\*Prices are exclusive of GST | All prices & Specifications are subject to change without notice.

# ACCESSORIES

WP BLANK  
Wall Plate Blank Standard



- Wall Plate Blank Standard

WPROBRUSH  
Wall Brush Plate



- Brush Cable Management Plate

RCA Female to BNC Male



RCA male to BNC female adapter



BNC barrel joiner



BNC T Piece Joiner



BNC Male RG59 BNC Connector



- RG59 Connector
- Separate Pin.

Quick Connect Surface Socket 10A



- Quick Connect Surface Socket
- Fits Both 1.5mm and 2.5mm TPS Cables
- 10A 250V AC
- Australian Standards Approved Product

Trade Price

BLUE STAR PLUG  
25mm/35mm/50mm



- Frame Pack of 25
- Light duty with tapered point

TPS CABLE CLIP  
2.5MM/1.5MM 500 PACK



- Cable Clips
- Suits 2.5mm/ 1.5mm Twin & Earth Cables
- Price is for 500 pieces per box

\*Prices are exclusive of GST | All prices & Specifications are subject to change without notice.



# ACCESSORIES

## PoE Splitter Connector for Cameras



- PoE Splitter - Permits the
- Power supply and connection of an IP camera Output
- Reduces from 48V DC to 12V DC

## RS-06 Power Supply with Battery



- Power Supply with Battery Backup
- 12VDC/5AMP with cabinet
- Requires 12V 7Amp Battery
- \*Battery not included

## Female DC Plug DC Female Socket



## 2.1mm Male DC Plug Connector for Cameras



## DC Power Splitter 1 to 4



## DC Power Splitter 1 to 8



## PFM800 Balun 2MP/4MP/8MP



- Real-time transmission over UTP CAT5E/6 cable
- Passive, no need for power supply
- Push terminal connections
- Compatible format: HDCVI/TVI/AHD/CVBS
- Transmission: 2MP upto 250Mtrs
- Transmission: 4M/6M/4K upto 200Mtrs

## PFM802 Passive HDCVI Balun With Power



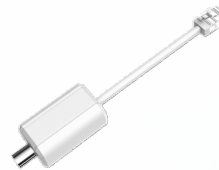
- Input voltage DC24-36V
- (CAT-5E and CAT-6)
- DC12V8W power supply to remote camera
- Real-time transmission

## PFM810 POC Transceiver



- Power supply: Input voltage DC24-36V
- can provide DC12V 9W(max) power supply to remote cameras, simplify engineering wiring
- Transmission effect: Real-time transmission video, no delay, strong anti-interference. Transmission distance: 400m (max)

## LR1002 EoC Passive Converter



- LR1002 EoC Passive Converter converts a power signal between an Ethernet cable and a coaxial cable

## 12V Power Supply AC/DC Adaptor



- Input 100-
- 240V AC, 50/60HZ.
- OUTPUT: 12VDC - 5 AMP

## 24VAC to 12VDC Voltage Converter



- 24v AC to 12v DC Power
- Converter 1 Amp

\*Prices are exclusive of GST | All prices & Specifications are subject to change without notice.

# ACCESSORIES

## PFM140 Pinhole Pickup



- Condenser microphone
- High fidelity
- Audio Output -RCA Male
- Working voltage : DC 12V(9~15V)
- Power supply polarity reversal protection

## LR1002-1ET/EC Single-Port Long Reach Ethernet over Coax Extender



- Port: 1\*RJ45 10/100Mbps, 1\*BNC
- Supports long range power supply transmission via coaxial cable

## PFT1200 Hi-PoE Midspan



- Support PoE for Hi-PoE 60W high power
- Indicator status: power, PoE
- Installation mode: wall mount

## PFT1300 PoE Extender



- Support passive PoE cascade power supply and Ethernet data exchange
- Support IEEE 802.3af/at standard power supply IP Camera
- Cooperate with High PoE Midspan
- Able to cascade level 2 PoE Extender
- Connect to 3 IPC max transmission distance

## HAP300 Hi-fidelity Pickup



- Aluminum material
- Scope : 5~150 Sqm
- Working voltage : DC 12V(9~18V)
- Audio Output -RCA Socket
- ALC processing circuit
- DSP noise reduction

## CCTV Tester



- Ultra, FHD IPC Test Monitor
- 5" FHD IPS touch screen
- 4K HD-IP (ONVIF, Hik, Dahua, etc)
- H.264/H.265
- IP discovery

## PFM905 - CCTV Tester



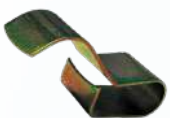
- Supports HDCVI/AHD/TVI/Analogue
- Supports RS485 PTZ Control
- Audio test and digital multi meter function
- Supports 12VDC @ 1 Amp power output
- 4" Colour Screen

## PFM900 - CCTV Tester



- Supports IP/HDCVI/AHD/TVI/Analogue
- Supports H.264/H.265 HD decoding
- Supports Audio and RS485 Control,
- Built In network cable tester and digital multi meter
- Supports PoE or 12VDC power output
- 4" Colour Screen

## 16 - 20mm Cable Girder Clips – 100 Jar



- Easy Clip On or Hammer Installation
- Suitable for 16 - 20mm wiring / cabling
- Tensioned / Spring loaded Metal Clip

## 25-32MM SPRING GIRDER CLIPS 100PACK



- Zinc plated
- Spring steel
- Clamps on most common I-beam sizes
- Range suits all common conduits up to 32mm

\*Prices are exclusive of GST | All prices & Specifications are subject to change without notice.